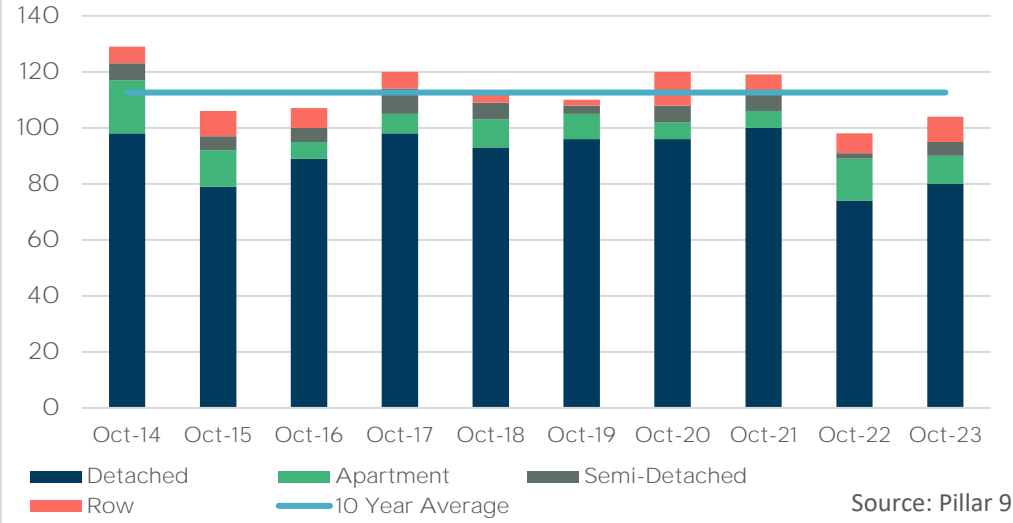


October 2023

Monthly Sales Comparison



SALES

104

↑ 6.1% Y/Y ↓ 3.6% YTD

NEW LISTINGS

137

↓ 11.6% Y/Y ↓ 6.5% YTD

INVENTORY

314

↓ 16.9% Y/Y → Monthly trend*

MONTHS OF SUPPLY

3.02

↓ 21.7% Y/Y → Monthly trend*

*The six month monthly trend is based on a moving average



TOTAL RESIDENTIAL AVG PRICE

\$ 349,449

↑ 11.3% Y/Y → Monthly trend*

DETACHED AVG PRICE

\$ 380,914

↑ 6.8% Y/Y → Monthly trend*

SEMI-DETACHED AVG PRICE

\$ 264,900

↑ 11.8% Y/Y → Monthly trend*

ROW AVG PRICE

\$ 250,618

↑ 33.5% Y/Y → Monthly trend*

APARTMENT AVG PRICE

\$ 228,950

↑ 31.9% Y/Y → Monthly trend*

October 2023

October 2023

	Sales		New Listings		Inventory		S/NL	Months of Supply		Average Price	
	Actual	Y/Y%	Actual	Y/Y%	Actual	Y/Y%	Ratio	Actual	Y/Y%	Actual	Y/Y%
Detached	80	8%	104	-18%	261	-10%	77%	3.26	-17%	\$380,914	7%
Semi-Detached	5	150%	15	67%	26	24%	33%	5.20	-50%	\$264,900	12%
Row	9	29%	9	80%	7	-61%	100%	0.78	-70%	\$250,618	34%
Apartment	10	-33%	9	-36%	20	-58%	111%	2.00	-38%	\$228,950	32%
Total Residential	104	6%	137	-12%	314	-17%	76%	3.02	-22%	\$349,449	11%

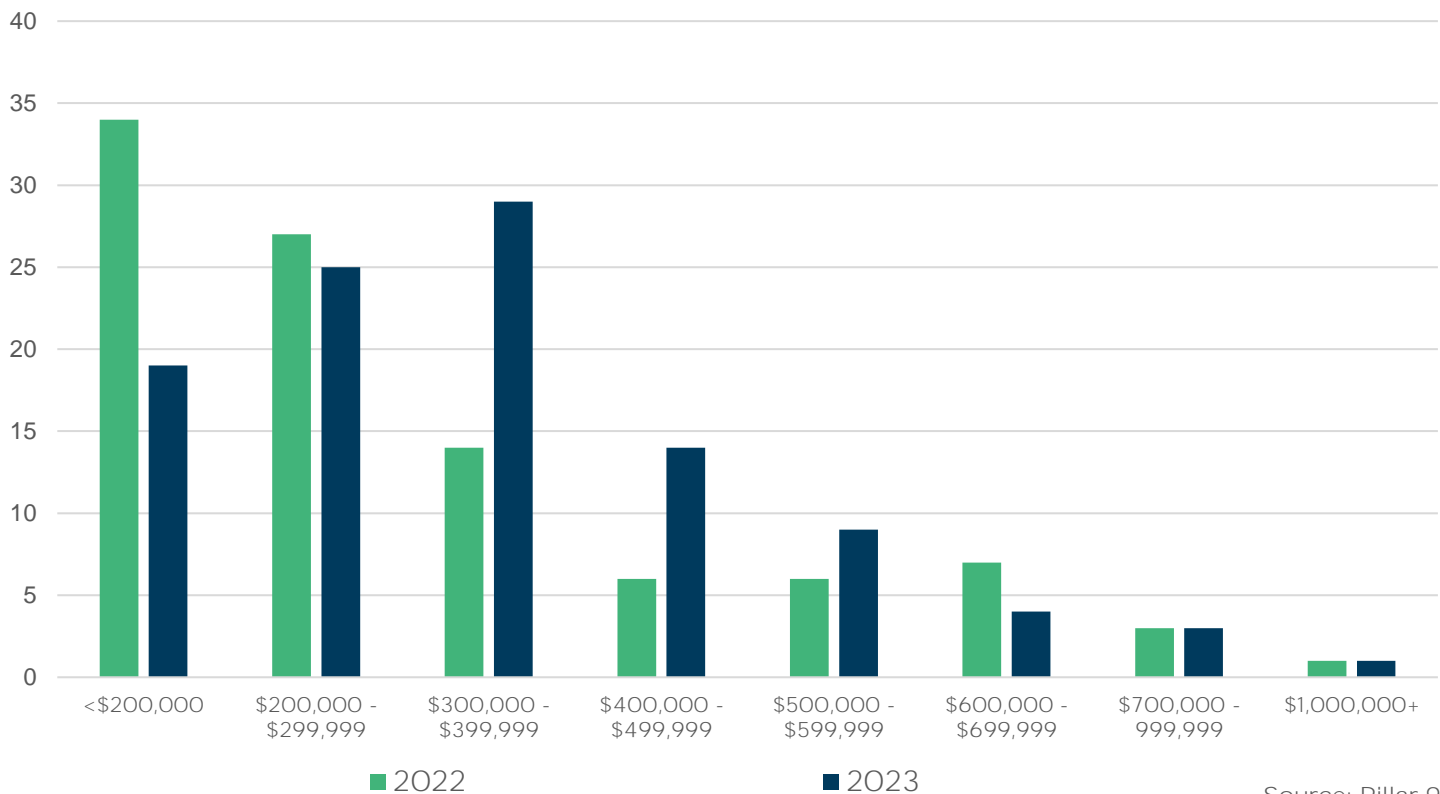
Year-to-Date

October 2023

	Sales		New Listings		Inventory		S/NL	Months of Supply		Average Price	
	Actual	Y/Y%	Actual	Y/Y%	Actual	Y/Y%	Ratio	Actual	Y/Y%	Actual	Y/Y%
Detached	889	-11%	1257	-10%	240	-5%	71%	2.70	7%	\$366,635	3%
Semi-Detached	72	95%	113	98%	24	79%	64%	3.28	-8%	\$325,309	7%
Row	103	0%	112	-16%	15	-36%	92%	1.44	-36%	\$217,879	2%
Apartment	150	22%	162	-9%	31	-34%	93%	2.05	-46%	\$192,172	5%
Total Residential	1214	-4%	1644	-6%	310	-8%	74%	2.55	-4%	\$330,006	2%

Residential Sales by Price Range

October



Source: Pillar 9

October 2023

October 2023

	Sales		New Listings		Inventory		S/NL	Months of Supply		Average Price		Median Price
	Actual	Y/Y%	Actual	Y/Y%	Actual	Y/Y%	Ratio	Actual	Y/Y%	Actual	Y/Y%	Actual
City of Medicine Hat	89	9%	109	-17%	218	-23%	82%	2.45	-29%	\$342,058	13%	\$332,000
Cypress County	9	-31%	22	10%	75	7%	41%	8.33	55%	\$466,839	13%	\$385,000
Forty Mile County Nc	6	100%	6	100%	21	-19%	100%	3.50	-60%	\$283,000	35%	\$256,750
Total	104	6%	137	-12%	314	-17%	76%	3.02	-22%	\$349,449	11%	\$329,750

Year-to-Date

October 2023

	Sales		New Listings		Inventory		S/NL	Months of Supply		Average Price		Median Price
	Actual	Y/Y%	Actual	Y/Y%	Actual	Y/Y%	Ratio	Actual	Y/Y%	Actual	Y/Y%	Actual
City of Medicine Hat	1039	-2%	1339	-6%	217	-9%	78%	2.09	-7%	\$320,965	2%	\$292,000
Cypress County	139	-15%	243	-8%	68	1%	57%	4.86	20%	\$425,864	1%	\$302,500
Forty Mile County Nc	36	9%	62	-10%	25	-16%	58%	6.94	-23%	\$220,829	13%	\$192,500
Total	1214	-4%	1644	-6%	310	-8%	74%	2.55	-4%	\$330,006	2%	\$290,000

Residential Land / Commercial

Dollar Volume of Sales

	October	YTD-OCT
Land	\$420,150	\$2,595,150
Agri-Business	\$0	\$7,170,100
Multi-Family (2-4 units)	\$1,601,000	\$9,527,000
Commercial	\$201,024	\$10,774,999

TOTAL RESIDENTIAL



CENSUS DIVISION 1														
Sales	Y/Y%	New Listings	Y/Y%	S/NL Ratio	Inventory	Y/Y%	Months of Supply	DOM	SP/LP	Median Price	Y/Y%	Average Price	Y/Y%	
Jan-14	82	26%	135	-15%	0.61	402	-9%	4.90	80	95.6%	258,125	-6.1%	258,379	-3.7%
Feb-14	84	-14%	150	1%	0.56	419	-5%	4.99	67	96.4%	265,000	14.7%	286,757	15.1%
Mar-14	118	27%	203	9%	0.58	458	-6%	3.88	63	96.0%	243,000	1.3%	265,044	-0.9%
Apr-14	142	-12%	247	7%	0.57	501	0%	3.53	61	96.4%	267,853	8.0%	284,674	8.3%
May-14	184	30%	256	0%	0.72	527	-6%	2.86	59	96.8%	269,875	4.8%	288,724	8.5%
Jun-14	197	50%	236	11%	0.83	511	-10%	2.59	57	97.1%	274,000	7.0%	281,508	3.2%
Jul-14	178	34%	189	-11%	0.94	467	-17%	2.62	52	96.6%	266,950	0.7%	280,450	3.3%
Aug-14	132	27%	205	17%	0.64	476	-15%	3.61	53	96.6%	263,500	-2.4%	277,146	1.2%
Sep-14	141	19%	194	-4%	0.73	454	-17%	3.22	49	96.8%	246,500	-6.0%	265,207	-9.9%
Oct-14	129	70%	146	1%	0.88	412	-23%	3.19	67	96.4%	243,000	-0.6%	261,799	-3.9%
Nov-14	95	23%	106	-12%	0.90	359	-27%	3.78	52	96.7%	295,000	14.8%	302,287	12.5%
Dec-14	68	6%	70	8%	0.97	305	-23%	4.49	78	95.6%	270,500	16.3%	278,861	5.6%
2014	1,550	23%	2,137	1%	0.73	441	-13%	3.64	60	96.5%	265,000	4.7%	278,003	3.1%
Jan-15	68	-17%	172	27%	0.40	370	-8%	5.44	74	96.1%	257,500	-0.2%	272,793	5.6%
Feb-15	79	-6%	168	12%	0.47	416	-1%	5.27	42	96.5%	275,000	3.8%	280,812	-2.1%
Mar-15	131	11%	187	-8%	0.70	427	-7%	3.26	64	96.6%	265,000	9.1%	293,718	10.8%
Apr-15	123	-13%	209	-15%	0.59	467	-7%	3.80	47	96.3%	246,000	-8.2%	276,830	-2.8%
May-15	125	-32%	191	-25%	0.65	477	-9%	3.82	50	96.2%	242,500	-10.1%	272,467	-5.6%
Jun-15	139	-29%	243	3%	0.57	518	1%	3.73	59	96.5%	286,500	4.6%	304,498	8.2%
Jul-15	140	-21%	224	19%	0.63	548	17%	3.91	61	96.7%	284,645	6.6%	298,760	6.5%
Aug-15	113	-14%	160	-22%	0.71	532	12%	4.71	62	96.7%	272,900	3.6%	299,375	8.0%
Sep-15	122	-13%	194	0%	0.63	510	12%	4.18	59	96.8%	283,500	15.0%	305,230	15.1%
Oct-15	106	-18%	200	37%	0.53	517	25%	4.88	54	96.1%	246,500	1.4%	281,725	7.6%
Nov-15	90	-5%	141	33%	0.64	493	37%	5.48	54	96.1%	270,000	-8.5%	285,808	-5.5%
Dec-15	69	1%	97	39%	0.71	440	44%	6.38	68	95.1%	257,500	-4.8%	281,867	1.1%
2015	1,305	-16%	2,186	2%	0.60	476	10%	4.57	57	96.4%	265,000	0.0%	289,328	4.1%
Jan-16	59	-13%	138	-20%	0.43	453	22%	7.68	74	94.1%	219,500	-14.8%	240,206	-11.9%
Feb-16	93	18%	190	13%	0.49	517	24%	5.56	72	95.5%	257,500	-6.4%	285,463	1.7%
Mar-16	94	-28%	222	19%	0.42	582	36%	6.19	74	95.5%	246,250	-7.1%	286,060	-2.6%
Apr-16	111	-10%	218	4%	0.51	607	30%	5.47	63	96.2%	245,000	-0.4%	258,323	-6.7%
May-16	128	2%	233	22%	0.55	618	30%	4.83	59	96.2%	246,750	1.8%	260,873	-4.3%
Jun-16	164	18%	224	-8%	0.73	596	15%	3.63	61	95.9%	276,000	-3.7%	285,031	-6.4%
Jul-16	118	-16%	185	-17%	0.64	596	9%	5.05	77	95.8%	260,000	-8.7%	284,278	-4.8%
Aug-16	114	1%	206	29%	0.55	602	13%	5.28	71	95.8%	273,931	0.4%	293,561	-1.9%
Sep-16	102	-16%	201	4%	0.51	620	22%	6.08	69	95.6%	255,500	-9.9%	267,469	-12.4%
Oct-16	107	1%	177	-12%	0.60	593	15%	5.54	74	96.0%	250,000	1.4%	285,704	1.4%
Nov-16	79	-12%	162	15%	0.49	572	16%	7.24	74	94.9%	277,000	2.6%	281,058	-1.7%
Dec-16	57	-17%	67	-31%	0.85	471	7%	8.26	70	95.1%	242,500	-5.8%	257,104	-8.8%
2016	1,226	-6%	2,223	2%	0.55	569	20%	5.90	69	95.7%	255,000	-3.8%	275,809	-4.7%
Jan-17	62	5%	170	23%	0.36	506	12%	8.16	94	94.8%	210,000	-4.3%	255,443	6.3%
Feb-17	94	1%	163	-14%	0.58	521	1%	5.54	88	95.8%	248,625	-3.4%	264,086	-7.5%
Mar-17	104	11%	189	-15%	0.55	545	-6%	5.24	72	95.8%	253,500	2.9%	285,445	-0.2%
Apr-17	131	18%	203	-7%	0.65	564	-7%	4.31	74	96.6%	265,000	8.2%	291,215	12.7%
May-17	121	-5%	225	-3%	0.54	607	-2%	5.02	60	95.9%	254,500	3.1%	276,517	6.0%
Jun-17	165	1%	221	-1%	0.75	592	-1%	3.59	63	95.7%	253,000	-8.3%	276,090	-3.1%
Jul-17	135	14%	190	3%	0.71	583	-2%	4.32	68	96.5%	271,500	4.4%	289,466	1.8%
Aug-17	121	6%	212	3%	0.57	590	-2%	4.88	67	96.0%	260,000	-5.1%	276,685	-5.7%
Sep-17	105	3%	205	2%	0.51	605	-2%	5.76	70	95.9%	257,000	0.6%	298,605	11.6%
Oct-17	120	12%	154	-13%	0.78	555	-6%	4.63	75	96.0%	262,750	5.1%	298,812	4.6%
Nov-17	76	-4%	127	-22%	0.60	529	-8%	6.96	84	95.8%	262,450	-5.3%	267,638	-4.8%
Dec-17	71	25%	80	19%	0.89	426	-10%	6.00	70	96.2%	250,000	3.1%	279,615	8.8%
2017	1,305	6%	2,139	-4%	0.61	552	-3%	5.37	72	96.0%	259,000	1.6%	281,587	2.1%
Jan-18	66	6%	179	5%	0.37	467	-8%	7.08	86	96.2%	271,750	29.4%	295,994	15.9%
Feb-18	72	-23%	142	-13%	0.51	504	-3%	7.00	83	95.2%	261,000	5.0%	272,703	3.3%
Mar-18	93	-11%	188	-1%	0.49	540	-1%	5.81	83	96.4%	270,000	6.5%	296,239	3.8%
Apr-18	107	-18%	217	7%	0.49	594	5%	5.55	74	95.9%	260,000	-1.9%	271,128	-6.9%
May-18	148	22%	284	26%	0.52	657	8%	4.44	65	96.2%	253,250	-0.5%	276,802	0.1%
Jun-18	148	-10%	243	10%	0.61	685	16%	4.63	60	95.9%	255,000	0.8%	274,237	-0.7%
Jul-18	114	-16%	236	24%	0.48	724	24%	6.35	59	95.6%	251,250	-7.5%	278,728	-3.7%
Aug-18	119	-2%	217	2%	0.55	727	23%	6.11	54	95.7%	258,500	-0.6%	272,902	-1.4%
Sep-18	88	-16%	196	-4%	0.45	727	20%	8.26	69	95.5%	254,725	-0.9%	277,159	-7.2%
Oct-18	113	-6%	182	18%	0.62	677	22%	5.99	82	95.4%	265,000	0.9%	284,777	-4.7%
Nov-18	89	17%	147	16%	0.61	628	19%	7.06	73	95.9%	267,000	1.7%	297,253	11.1%
Dec-18	62	-13%	98	23%	0.63	519	22%	8.37	80	94.0%	271,000	8.4%	268,169	-4.1%
2018	1,219	-7%	2,329	9%	0.52	621	12%	6.39	70	95.7%	260,000	0.4%	279,891	-0.6%

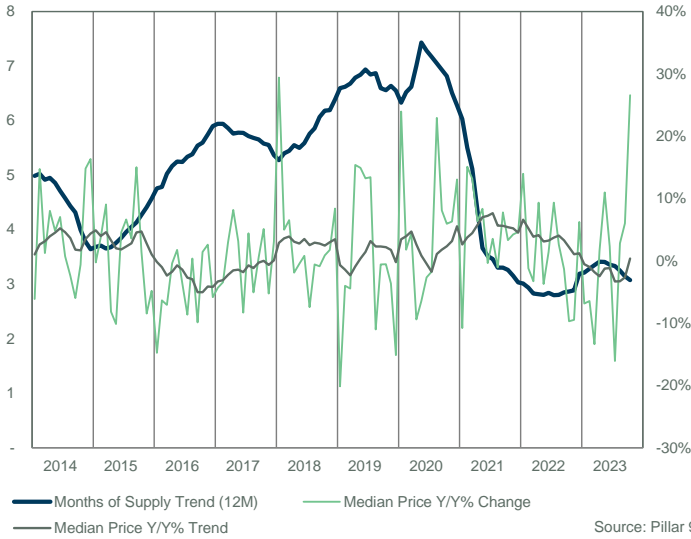
TOTAL RESIDENTIAL



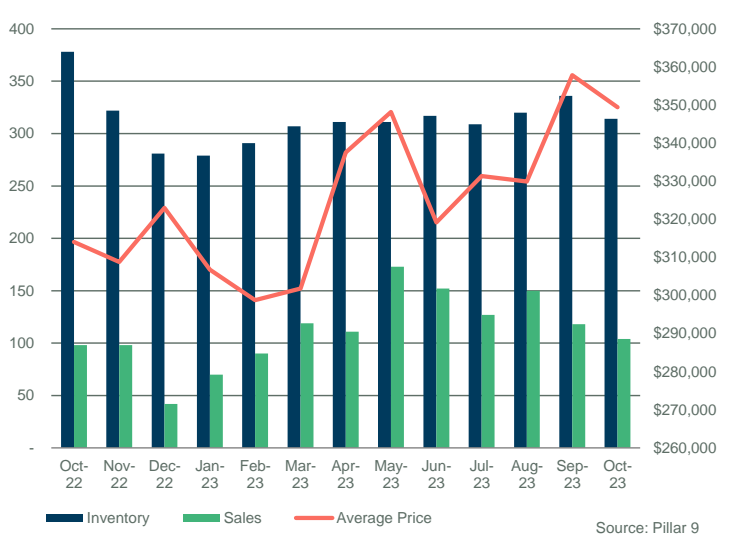
CENSUS DIVISION 1														
Sales	Y/Y%	New Listings	Y/Y%	S/NL Ratio	Inventory	Y/Y%	Months of Supply	DOM	SP/LP	Median Price	Y/Y%	Average Price	Y/Y%	
Jan-19	57	-14%	166	-7%	0.34	547	17%	9.60	90	93.8%	217,000	-20.1%	235,277	-20.5%
Feb-19	74	3%	124	-13%	0.60	539	7%	7.28	83	94.6%	250,500	-4.0%	264,965	-2.8%
Mar-19	89	-4%	206	10%	0.43	580	7%	6.52	89	95.6%	258,000	-4.4%	279,941	-5.5%
Apr-19	97	-9%	236	9%	0.41	664	12%	6.85	73	95.8%	300,000	15.4%	294,120	8.5%
May-19	136	-8%	235	-17%	0.58	692	5%	5.09	74	95.4%	291,000	14.9%	300,388	8.5%
Jun-19	122	-18%	203	-16%	0.60	702	2%	5.75	76	96.2%	288,700	13.2%	311,237	13.5%
Jul-19	135	18%	242	3%	0.56	712	-2%	5.27	75	95.5%	285,000	13.4%	305,357	9.6%
Aug-19	111	-7%	195	-10%	0.57	711	-2%	6.41	76	95.2%	230,000	-11.0%	250,143	-8.3%
Sep-19	132	50%	182	-7%	0.73	655	-10%	4.96	79	95.4%	253,250	-0.6%	270,296	-2.5%
Oct-19	110	-3%	165	-9%	0.67	608	-10%	5.53	82	95.6%	263,500	-0.6%	277,956	-2.4%
Nov-19	72	-19%	129	-12%	0.56	576	-8%	8.00	89	95.3%	257,250	-3.7%	292,637	-1.6%
Dec-19	67	8%	85	-13%	0.79	492	-5%	7.34	72	94.0%	230,000	-15.1%	252,870	-5.7%
2019	1,202	-1%	2,168	-7%	0.55	623	1%	6.55	79	95.3%	260,000	0.0%	281,649	0.6%
Jan-20	76	33%	163	-2%	0.47	528	-3%	6.95	96	95.0%	269,000	24.0%	274,187	16.5%
Feb-20	57	-23%	125	1%	0.46	547	1%	9.60	83	95.3%	255,000	1.8%	276,721	4.4%
Mar-20	70	-21%	147	-29%	0.48	539	-7%	7.70	84	95.4%	269,500	4.5%	296,341	5.9%
Apr-20	44	-55%	114	-52%	0.39	506	-24%	11.50	98	94.4%	271,750	-9.4%	292,996	-0.4%
May-20	58	-57%	182	-23%	0.32	590	-15%	10.17	108	95.3%	272,250	-6.4%	321,553	7.0%
Jun-20	150	23%	222	9%	0.68	597	-15%	3.98	89	96.5%	281,000	-2.7%	308,811	-0.8%
Jul-20	147	9%	186	-23%	0.79	575	-19%	3.91	92	95.8%	280,000	-1.8%	304,271	-0.4%
Aug-20	116	5%	176	-10%	0.66	572	-20%	4.93	83	95.7%	282,750	22.9%	303,020	21.1%
Sep-20	148	12%	185	2%	0.80	529	-19%	3.57	68	95.8%	273,750	8.1%	305,361	13.0%
Oct-20	120	9%	149	-10%	0.81	497	-18%	4.14	75	95.9%	279,200	6.0%	308,804	11.1%
Nov-20	106	47%	123	-5%	0.86	457	-21%	4.31	72	96.0%	273,450	6.3%	291,653	-0.3%
Dec-20	82	22%	76	-11%	1.08	374	-24%	4.56	89	95.8%	260,000	13.0%	292,992	15.9%
2020	1,174	-2%	1,848	-15%	0.64	526	-15%	6.28	84	95.7%	275,000	5.8%	300,074	6.5%
Jan-21	95	25%	143	-12%	0.66	377	-29%	3.97	89	95.4%	240,000	-10.8%	274,515	0.1%
Feb-21	118	107%	162	30%	0.73	388	-29%	3.29	65	96.9%	293,500	15.1%	328,824	18.8%
Mar-21	141	101%	222	51%	0.64	431	-20%	3.06	84	96.7%	305,000	13.2%	353,741	19.4%
Apr-21	184	318%	211	85%	0.87	411	-19%	2.23	65	97.2%	289,000	6.3%	314,339	7.3%
May-21	207	257%	243	34%	0.85	410	-31%	1.98	53	97.3%	295,000	8.4%	322,300	0.2%
Jun-21	179	19%	216	-3%	0.83	401	-33%	2.24	45	97.8%	280,000	-0.4%	311,730	0.9%
Jul-21	125	-15%	170	-9%	0.74	406	-29%	3.25	42	97.5%	289,900	3.5%	307,973	1.2%
Aug-21	138	19%	195	11%	0.71	417	-27%	3.02	43	97.0%	279,750	-1.1%	299,178	-1.3%
Sep-21	121	-18%	186	1%	0.65	434	-18%	3.59	47	96.8%	295,000	7.8%	310,706	1.8%
Oct-21	119	-1%	178	19%	0.67	436	-12%	3.66	57	96.4%	288,500	3.3%	320,444	3.8%
Nov-21	125	18%	134	9%	0.93	376	-18%	3.01	67	96.5%	285,000	4.2%	318,504	9.2%
Dec-21	96	17%	83	9%	1.16	296	-21%	3.08	48	96.2%	272,000	4.6%	275,426	-6.0%
2021	1,648	40%	2,143	16%	0.77	399	-24%	3.03	58	96.9%	285,000	3.6%	313,639	4.5%
Jan-22	78	-18%	120	-16%	0.65	291	-23%	3.73	71	96.1%	273,514	14.0%	293,605	7.0%
Feb-22	117	-1%	131	-19%	0.89	278	-28%	2.38	58	97.3%	290,000	-1.2%	330,312	0.5%
Mar-22	159	13%	191	-14%	0.83	279	-35%	1.75	48	97.6%	295,000	-3.3%	305,743	-13.6%
Apr-22	149	-19%	200	-5%	0.75	310	-25%	2.08	39	97.6%	316,000	9.3%	351,834	11.9%
May-22	167	-19%	202	-17%	0.83	308	-25%	1.84	34	98.4%	284,000	-3.7%	332,430	3.1%
Jun-22	133	-26%	217	0%	0.61	355	-11%	2.67	34	98.1%	284,000	1.4%	327,147	4.9%
Jul-22	136	9%	199	17%	0.68	375	-8%	2.76	44	97.5%	317,000	9.3%	330,030	7.2%
Aug-22	127	-8%	191	-2%	0.66	393	-6%	3.09	36	97.3%	287,000	2.6%	306,351	2.4%
Sep-22	95	-21%	152	-18%	0.63	392	-10%	4.13	51	96.5%	291,000	-1.4%	340,974	9.7%
Oct-22	98	-18%	155	-13%	0.63	378	-13%	3.86	50	96.1%	260,500	-9.7%	314,059	-2.0%
Nov-22	98	-22%	98	-27%	1.00	322	-14%	3.29	53	96.9%	258,000	-9.5%	308,789	-3.1%
Dec-22	42	-56%	56	-33%	0.75	281	-5%	6.69	73	95.9%	289,000	6.3%	322,990	17.3%
2022	1,399	-15%	1,912	-11%	0.73	330	-17%	3.19	46	97.3%	289,000	1.4%	323,372	3.1%
Jan-23	70	-10%	112	-7%	0.63	279	-4%	3.99	68	96.2%	254,750	-6.9%	306,763	4.5%
Feb-23	90	-23%	136	4%	0.66	291	5%	3.23	56	96.8%	271,250	-6.5%	298,780	-9.5%
Mar-23	119	-25%	174	-9%	0.68	307	10%	2.58	47	97.0%	255,500	-13.4%	301,847	-1.3%
Apr-23	111	-26%	148	-26%	0.75	311	0%	2.80	49	97.4%	321,000	1.6%	337,544	-4.1%
May-23	173	4%	213	5%	0.81	311	1%	1.80	48	97.4%	315,200	11.0%	348,157	4.7%
Jun-23	152	14%	199	-8%	0.76	317	-11%	2.09	36	97.4%	290,500	2.3%	319,158	-2.4%
Jul-23	127	-7%	152	-24%	0.84	309	-18%	2.43	44	97.3%	266,000	-16.1%	331,357	0.4%
Aug-23	150	18%	200	5%	0.75	320	-19%	2.13	40	97.3%	295,000	2.8%	329,898	7.7%
Sep-23	118	24%	173	14%	0.68	336	-14%	2.85	39	96.2%	308,500	6.0%	357,831	4.9%
Oct-23	104	6%	137	-12%	0.76	314	-17%	3.02	53	97.4%	329,750	26.6%	349,449	11.3%
Nov-23														
Dec-23														
2023	1,214	-4%	1,644	-6%	0.74	310	-7%	2.69	47	97.1%	290,000	0.0%	330,322	1.7%

CENSUS DIVISION 1

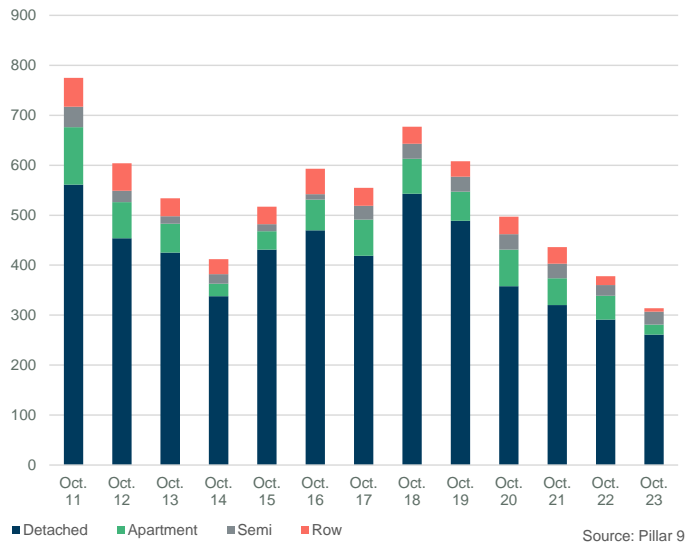
MONTHS OF SUPPLY AND PRICE CHANGE



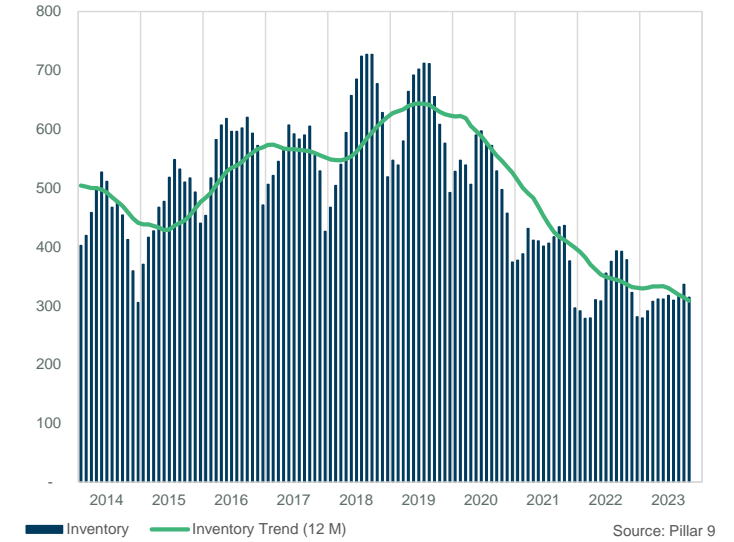
INVENTORY, SALES, AND PRICE



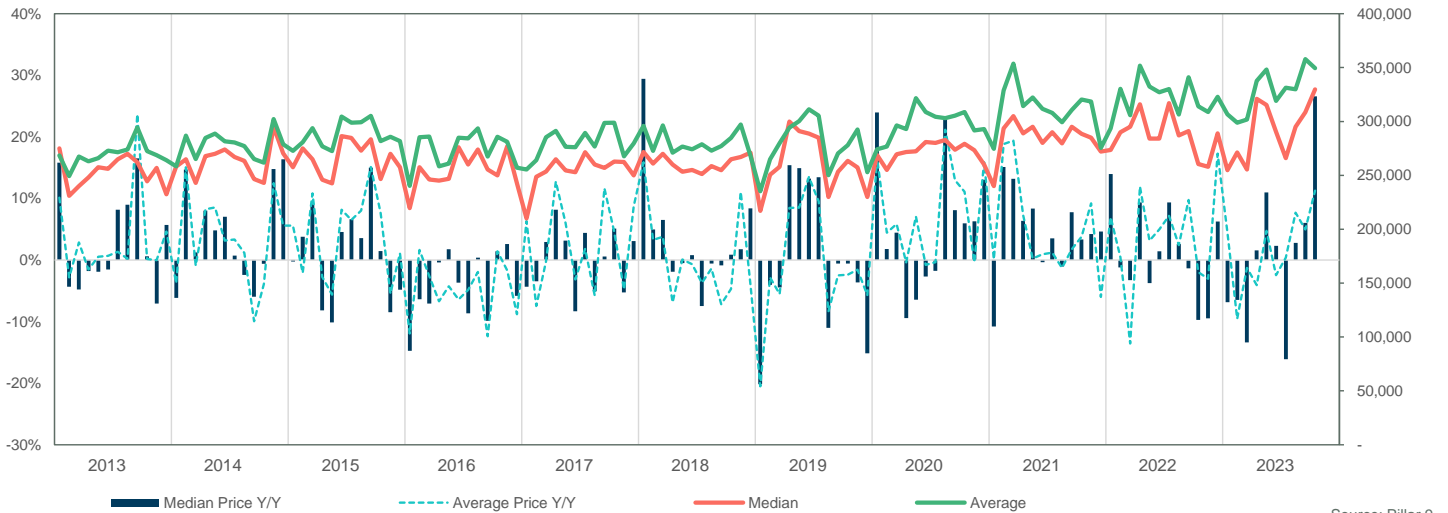
INVENTORY



INVENTORY



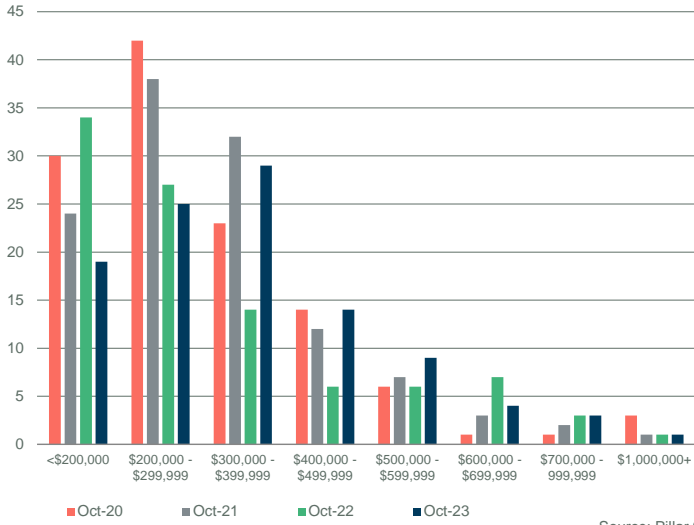
PRICE COMPARISON



CENSUS DIVISION 1

SALES BY PRICE RANGE

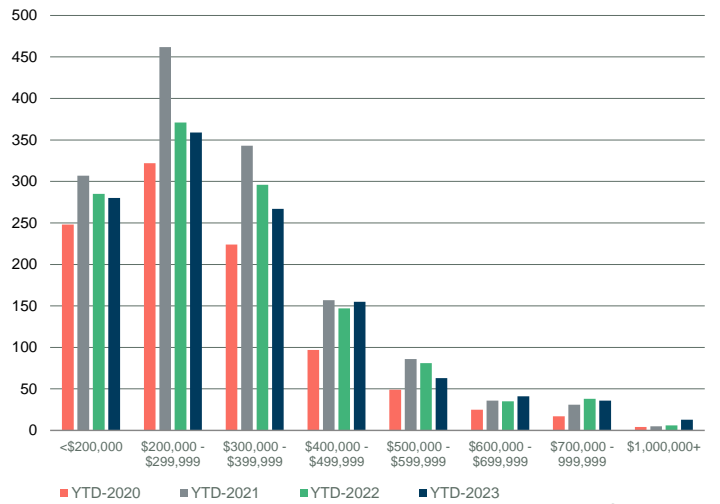
October



Source: Pillar 9

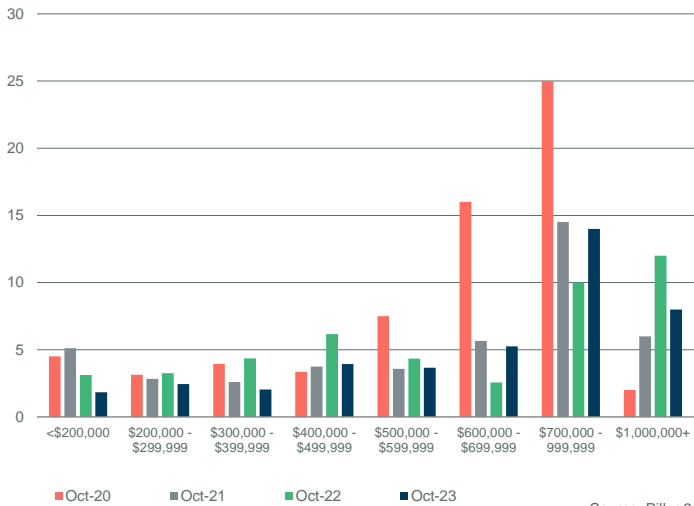
YTD SALES BY PRICE RANGE

YTD-OCT



Source: Pillar 9

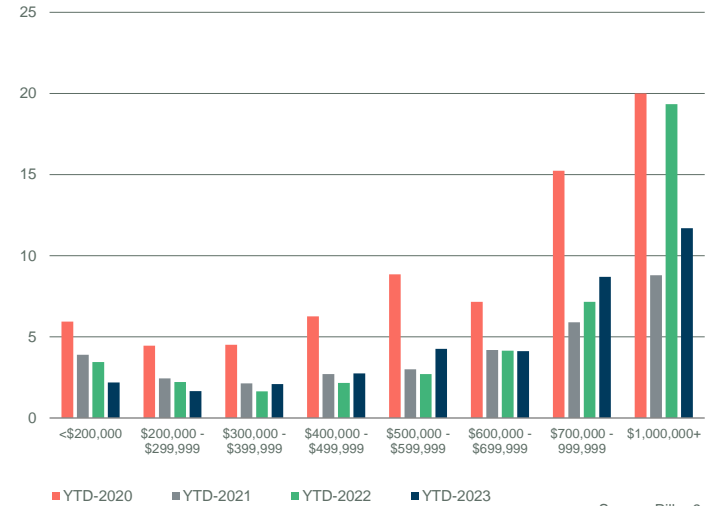
MONTHS OF SUPPLY BY PRICE RANGE



Source: Pillar 9

YTD MONTHS OF SUPPLY BY PRICE RANGE

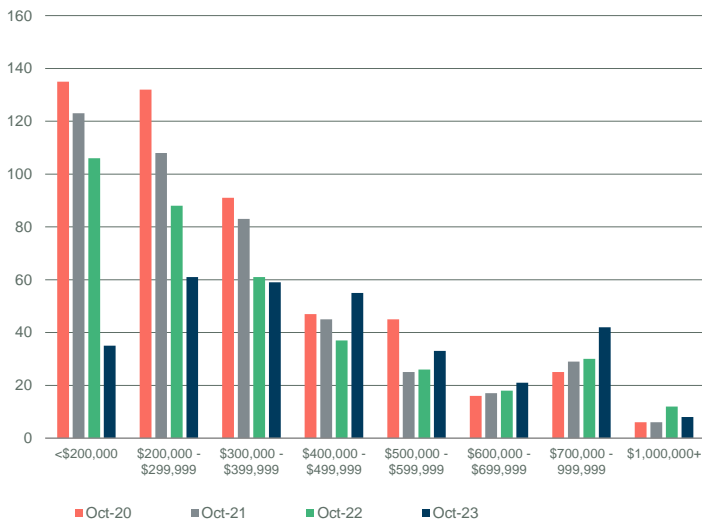
YTD-OCT



Source: Pillar 9

INVENTORY BY PRICE RANGE

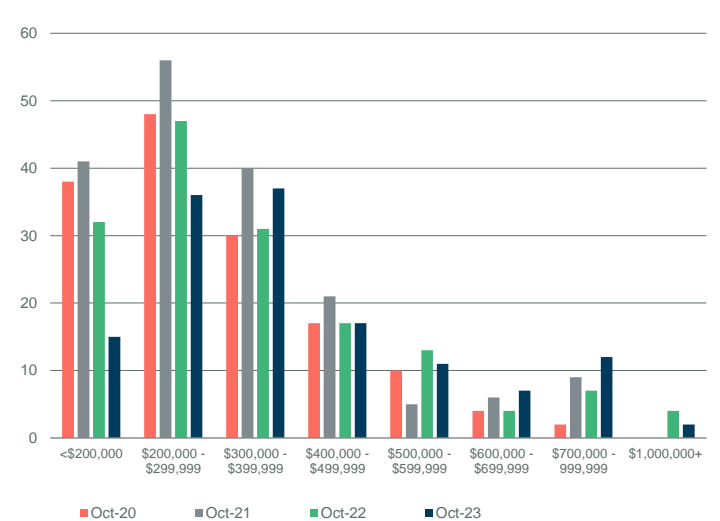
October



Source: Pillar 9

NEW LISTINGS BY PRICE RANGE

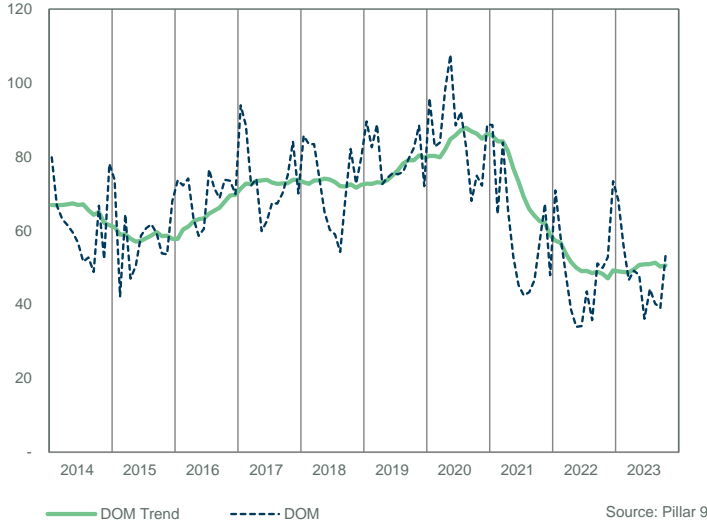
October



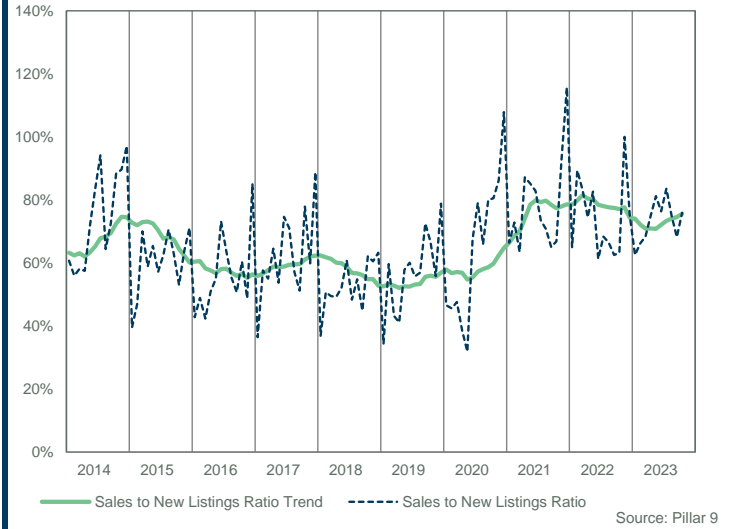
Source: Pillar 9

CENSUS DIVISION 1

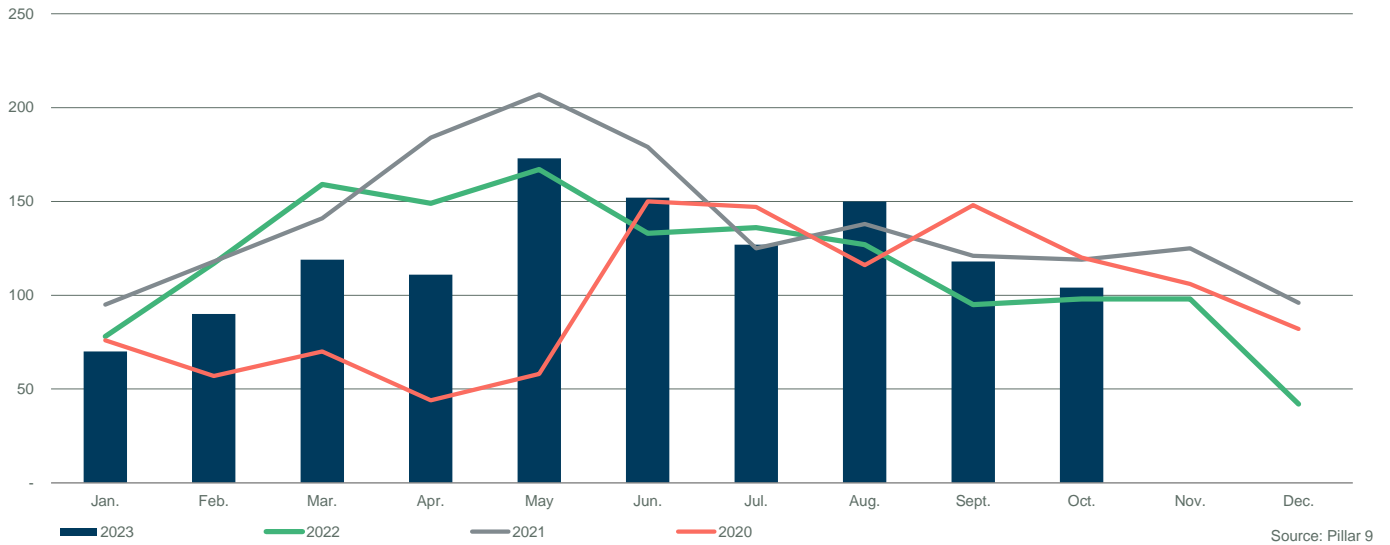
DAYS ON MARKET



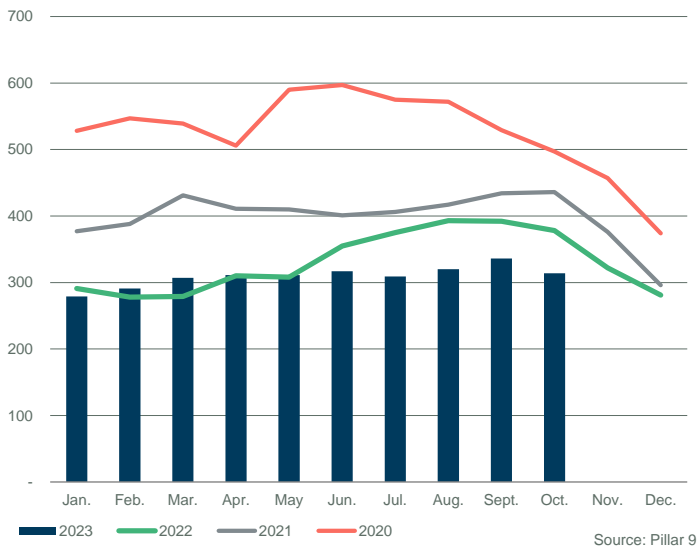
SALES TO NEW LISTINGS RATIO



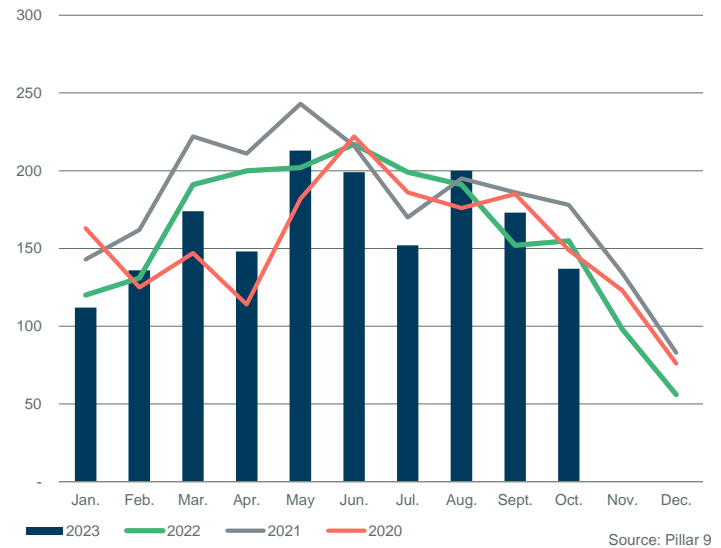
SALES COMPARISON



INVENTORY COMPARISON



NEW LISTINGS COMPARISON

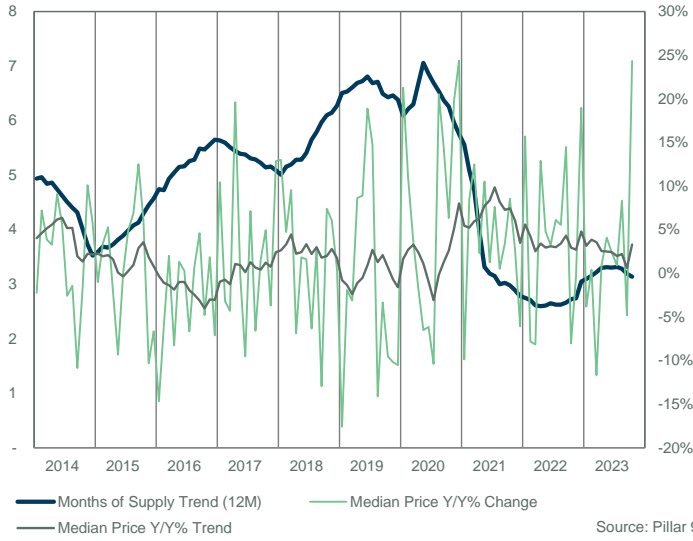


CENSUS DIVISION 1														
Sales	Y/Y%	New Listings	Y/Y%	S/NL Ratio	Inventory	Y/Y%	Months of Supply	DOM	SP/LP	Median Price	Y/Y%	Average Price	Y/Y%	
Jan-14	68	21%	109	-8%	0.62	331	3%	4.87	76	95.3%	272,250	-2.2%	273,046	-3.1%
Feb-14	75	-4%	125	4%	0.60	339	3%	4.52	67	96.3%	275,000	7.2%	296,651	13.4%
Mar-14	101	38%	164	12%	0.62	366	-1%	3.62	58	96.0%	270,000	3.8%	276,641	-4.1%
Apr-14	121	-6%	203	3%	0.60	398	0%	3.29	55	96.5%	284,000	3.3%	301,717	8.3%
May-14	153	40%	209	1%	0.73	416	-8%	2.72	59	96.8%	300,000	9.1%	306,067	10.6%
Jun-14	166	44%	200	23%	0.83	406	-8%	2.45	58	97.1%	292,494	5.6%	298,238	5.3%
Jul-14	142	31%	154	-10%	0.92	376	-14%	2.65	53	96.5%	285,925	-2.6%	298,932	4.4%
Aug-14	109	20%	162	18%	0.67	376	-12%	3.45	56	96.4%	276,000	-1.4%	292,309	3.2%
Sep-14	106	12%	156	-10%	0.68	367	-15%	3.46	48	96.6%	258,500	-10.9%	278,311	-12.2%
Oct-14	98	63%	117	-3%	0.84	338	-20%	3.45	51	96.5%	265,000	-1.9%	280,355	-4.7%
Nov-14	83	43%	90	-13%	0.92	289	-28%	3.48	53	96.6%	311,000	10.1%	320,329	13.2%
Dec-14	56	14%	56	-3%	1.00	244	-26%	4.36	83	95.3%	282,500	5.8%	294,259	1.7%
2014	1,278	25%	1,745	2%	0.73	354	-11%	3.53	58	96.5%	280,500	1.3%	294,172	3.2%
Jan-15	52	-24%	133	22%	0.39	294	-11%	5.65	78	95.7%	269,500	-1.0%	284,663	4.3%
Feb-15	59	-21%	134	7%	0.44	335	-1%	5.68	43	96.4%	284,289	3.4%	293,819	-1.0%
Mar-15	103	2%	149	-9%	0.69	349	-5%	3.39	62	96.6%	284,289	5.3%	316,753	14.5%
Apr-15	95	-21%	171	-16%	0.56	383	-4%	4.03	50	96.1%	278,000	-2.1%	302,358	0.2%
May-15	101	-34%	147	-30%	0.69	379	-9%	3.75	51	96.2%	272,000	-9.3%	289,854	-5.3%
Jun-15	122	-27%	198	-1%	0.62	409	1%	3.35	61	96.4%	292,915	0.1%	315,769	5.9%
Jul-15	117	-18%	191	24%	0.61	441	17%	3.77	59	96.8%	300,000	4.9%	322,312	7.8%
Aug-15	93	-15%	129	-20%	0.72	426	13%	4.58	55	96.6%	295,000	6.9%	321,803	10.1%
Sep-15	103	-3%	160	3%	0.64	416	13%	4.04	58	96.8%	290,829	12.5%	321,008	15.3%
Oct-15	79	-19%	167	43%	0.47	431	28%	5.46	46	96.2%	281,000	6.0%	309,675	10.5%
Nov-15	76	-8%	115	28%	0.66	406	40%	5.34	54	96.3%	278,875	-10.3%	301,897	-5.8%
Dec-15	62	11%	80	43%	0.78	359	47%	5.79	72	95.1%	263,750	-6.6%	290,376	-1.3%
2015	1,062	-17%	1,774	2%	0.60	386	11%	4.57	57	96.3%	285,000	1.6%	308,287	4.8%
Jan-16	48	-8%	111	-17%	0.43	370	26%	7.71	71	94.3%	230,000	-14.7%	246,937	-13.3%
Feb-16	78	32%	168	25%	0.46	429	28%	5.50	72	95.5%	267,500	-5.9%	296,322	0.9%
Mar-16	81	-21%	181	21%	0.45	475	36%	5.86	71	95.3%	290,000	2.0%	297,472	-6.1%
Apr-16	90	-5%	165	-4%	0.55	483	26%	5.37	67	96.1%	255,000	-8.3%	267,433	-11.6%
May-16	98	-3%	191	30%	0.51	493	30%	5.03	58	96.2%	275,625	1.3%	280,754	-3.1%
Jun-16	136	11%	184	-7%	0.74	474	16%	3.49	60	96.0%	293,750	0.3%	300,262	-4.9%
Jul-16	97	-17%	158	-17%	0.61	477	8%	4.92	72	95.9%	280,000	-6.7%	308,886	-4.2%
Aug-16	98	5%	165	28%	0.59	478	12%	4.88	74	95.7%	297,100	0.7%	310,740	-3.4%
Sep-16	77	-25%	169	6%	0.46	500	20%	6.49	63	95.3%	304,250	4.6%	289,875	-9.7%
Oct-16	89	13%	134	-20%	0.66	470	9%	5.28	77	96.0%	267,500	-4.8%	302,813	-2.2%
Nov-16	69	-9%	126	10%	0.55	444	9%	6.43	77	94.7%	284,000	1.8%	288,628	-4.4%
Dec-16	51	-18%	49	-39%	1.04	348	-3%	6.82	67	95.3%	245,000	-7.1%	261,459	-10.0%
2016	1,012	-5%	1,801	2%	0.56	453	18%	5.65	68	95.6%	275,125	-3.5%	290,924	-5.6%
Jan-17	50	4%	136	23%	0.37	378	2%	7.56	89	95.1%	254,000	10.4%	277,715	12.5%
Feb-17	77	-1%	129	-23%	0.60	386	-10%	5.01	82	95.6%	259,000	-3.2%	274,155	-7.5%
Mar-17	84	4%	154	-15%	0.55	407	-14%	4.85	70	95.7%	277,500	-4.3%	305,313	2.6%
Apr-17	96	7%	155	-6%	0.62	434	-10%	4.52	70	96.8%	305,000	19.6%	323,347	20.9%
May-17	103	5%	178	-7%	0.58	456	-8%	4.43	52	96.0%	275,000	-0.2%	294,021	4.7%
Jun-17	132	-3%	176	-4%	0.75	442	-7%	3.35	64	95.7%	265,750	-9.5%	296,017	-1.4%
Jul-17	107	10%	146	-8%	0.73	434	-9%	4.06	66	96.6%	300,000	7.1%	311,050	0.7%
Aug-17	97	-1%	175	6%	0.55	449	-6%	4.63	64	96.2%	277,500	-6.6%	291,566	-6.2%
Sep-17	82	6%	172	2%	0.48	472	-6%	5.76	61	95.9%	309,000	1.6%	327,409	12.9%
Oct-17	98	10%	116	-13%	0.84	419	-11%	4.28	66	96.1%	280,750	5.0%	314,996	4.0%
Nov-17	61	-12%	104	-17%	0.59	404	-9%	6.62	77	96.1%	273,500	-3.7%	282,657	-2.1%
Dec-17	56	10%	68	39%	0.82	336	-3%	6.00	68	96.4%	276,500	12.9%	306,088	17.1%
2017	1,043	3%	1,709	-5%	0.61	418	-8%	5.09	68	96.0%	278,000	1.0%	301,732	3.7%
Jan-18	55	10%	139	2%	0.40	364	-4%	6.62	90	96.5%	287,000	13.0%	313,560	12.9%
Feb-18	57	-26%	98	-24%	0.58	384	-1%	6.74	89	95.1%	271,250	4.7%	286,766	4.6%
Mar-18	76	-10%	145	-6%	0.52	405	0%	5.33	87	96.4%	304,000	9.5%	319,572	4.7%
Apr-18	82	-15%	176	14%	0.47	459	6%	5.60	71	96.3%	284,000	-6.9%	292,140	-9.7%
May-18	118	15%	235	32%	0.50	521	14%	4.42	63	96.0%	280,000	1.8%	294,714	0.2%
Jun-18	114	-14%	192	9%	0.59	552	25%	4.84	56	95.8%	270,000	1.6%	291,799	-1.4%
Jul-18	85	-21%	196	34%	0.43	592	36%	6.96	50	95.2%	281,000	-6.3%	301,451	-3.1%
Aug-18	95	-2%	181	3%	0.52	602	34%	6.34	53	95.6%	285,000	2.7%	292,729	0.4%
Sep-18	75	-9%	155	-10%	0.48	592	25%	7.89	68	95.3%	269,000	-12.9%	290,999	-11.1%
Oct-18	93	-5%	148	28%	0.63	543	30%	5.84	83	95.5%	301,500	7.4%	298,794	-5.1%
Nov-18	71	16%	119	14%	0.60	510	26%	7.18	75	95.8%	290,000	6.0%	315,149	11.5%
Dec-18	55	-2%	75	10%	0.73	416	24%	7.56	79	93.9%	277,500	0.4%	276,808	-9.6%
2018	976	-6%	1,859	9%	0.53	495	18%	6.28	70	95.7%	281,000	1.1%	297,665	-1.3%

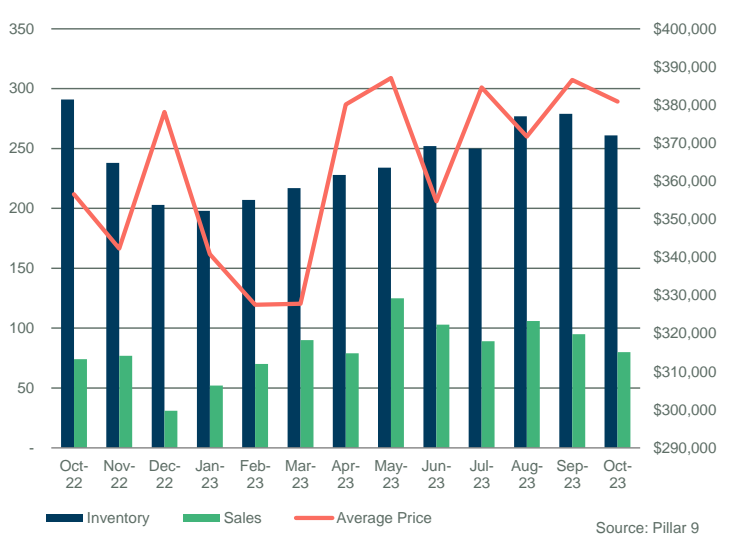
CENSUS DIVISION 1														
	Sales	Y/Y%	New Listings	Y/Y%	S/NL Ratio	Inventory	Y/Y%	Months of Supply	DOM	SP/LP	Median Price	Y/Y%	Average Price	Y/Y%
Jan-19	46	-16%	130	-6%	0.35	433	19%	9.41	87	93.6%	236,500	-17.6%	247,811	-21.0%
Feb-19	61	7%	101	3%	0.60	427	11%	7.00	90	94.5%	266,000	-1.9%	278,343	-2.9%
Mar-19	74	-3%	169	17%	0.44	462	14%	6.24	88	95.7%	294,500	-3.1%	304,791	-4.6%
Apr-19	80	-2%	186	6%	0.43	529	15%	6.61	72	95.8%	308,500	8.6%	310,551	6.3%
May-19	117	-1%	209	-11%	0.56	560	7%	4.79	71	95.3%	304,900	8.9%	314,568	6.7%
Jun-19	97	-15%	162	-16%	0.60	566	3%	5.84	71	96.1%	321,000	18.9%	333,417	14.3%
Jul-19	105	24%	200	2%	0.53	580	-2%	5.52	75	95.6%	322,500	14.8%	330,328	9.6%
Aug-19	88	-7%	162	-10%	0.54	584	-3%	6.64	71	95.1%	244,750	-14.1%	267,903	-8.5%
Sep-19	104	39%	156	1%	0.67	548	-7%	5.27	83	95.3%	260,000	-3.3%	289,882	-0.4%
Oct-19	96	3%	125	-16%	0.77	489	-10%	5.09	77	95.7%	272,750	-9.5%	288,963	-3.3%
Nov-19	60	-15%	101	-15%	0.59	453	-11%	7.55	89	95.2%	260,450	-10.2%	299,289	-5.0%
Dec-19	56	2%	61	-19%	0.92	371	-11%	6.63	72	93.5%	248,250	-10.5%	265,202	-4.2%
2019	984	1%	1,762	-5%	0.56	500	2%	6.38	78	95.3%	281,750	0.3%	298,658	0.3%
Jan-20	66	43%	124	-5%	0.53	390	-10%	5.91	95	94.9%	286,800	21.3%	289,836	17.0%
Feb-20	47	-23%	91	-10%	0.52	398	-7%	8.47	87	95.3%	295,000	10.9%	297,460	6.9%
Mar-20	55	-26%	122	-28%	0.45	402	-13%	7.31	81	95.1%	305,000	3.6%	319,762	4.9%
Apr-20	34	-58%	85	-54%	0.40	380	-28%	11.18	88	94.4%	303,000	-1.8%	315,716	1.7%
May-20	48	-59%	141	-33%	0.34	447	-20%	9.31	104	95.5%	285,000	-6.5%	347,171	10.4%
Jun-20	130	34%	177	9%	0.73	447	-21%	3.44	85	96.6%	301,250	-6.2%	325,064	-2.5%
Jul-20	122	16%	140	-30%	0.87	425	-27%	3.48	90	95.8%	289,000	-10.4%	323,621	-2.0%
Aug-20	89	1%	145	-10%	0.61	430	-26%	4.83	78	95.8%	295,000	20.5%	323,251	20.7%
Sep-20	118	13%	136	-13%	0.87	385	-30%	3.26	67	96.0%	297,250	14.3%	329,317	13.6%
Oct-20	96	0%	117	-6%	0.82	358	-27%	3.73	69	96.1%	290,000	6.3%	331,952	14.9%
Nov-20	81	35%	90	-11%	0.90	324	-28%	4.00	63	96.0%	312,000	19.8%	321,055	7.3%
Dec-20	62	11%	56	-8%	1.11	257	-31%	4.15	75	96.4%	308,750	24.4%	318,562	20.1%
2020	948	-4%	1,424	-19%	0.67	387	-22%	5.76	80	95.8%	297,250	5.5%	321,823	7.8%
Jan-21	74	12%	111	-10%	0.67	267	-32%	3.61	83	95.4%	258,500	-9.9%	290,151	0.1%
Feb-21	102	117%	135	48%	0.76	282	-29%	2.76	63	97.1%	320,000	8.5%	343,727	15.6%
Mar-21	113	105%	173	42%	0.65	315	-22%	2.79	84	97.2%	343,000	12.5%	389,046	21.7%
Apr-21	145	326%	170	100%	0.85	300	-21%	2.07	58	97.3%	310,000	2.5%	336,097	6.5%
May-21	177	269%	193	37%	0.92	291	-35%	1.64	50	97.4%	315,000	10.5%	342,147	-1.4%
Jun-21	141	8%	160	-10%	0.88	282	-37%	2.00	44	97.9%	305,000	1.2%	332,337	2.2%
Jul-21	98	-20%	130	-7%	0.75	289	-32%	2.95	40	97.9%	310,975	7.6%	332,404	2.7%
Aug-21	100	12%	148	2%	0.68	304	-29%	3.04	42	97.2%	296,500	0.5%	333,100	3.0%
Sep-21	90	-24%	140	3%	0.64	318	-17%	3.53	39	97.2%	307,500	3.4%	339,602	3.1%
Oct-21	100	4%	147	26%	0.68	320	-11%	3.20	53	96.3%	314,750	8.5%	340,554	2.6%
Nov-21	96	19%	107	19%	0.90	277	-15%	2.89	63	96.9%	320,000	2.6%	357,602	11.4%
Dec-21	75	21%	65	16%	1.15	216	-16%	2.88	44	96.4%	290,000	-6.1%	300,004	-5.8%
2021	1,311	38%	1,679	18%	0.78	288	-25%	2.78	55	97.1%	310,000	4.3%	338,659	5.2%
Jan-22	64	-14%	87	-22%	0.74	206	-23%	3.22	69	96.4%	299,000	15.7%	308,116	6.2%
Feb-22	89	-13%	104	-23%	0.86	202	-28%	2.27	53	97.4%	295,000	-7.8%	355,038	3.3%
Mar-22	125	11%	149	-14%	0.84	204	-35%	1.63	46	97.8%	315,000	-8.2%	331,936	-14.7%
Apr-22	122	-16%	164	-4%	0.74	232	-23%	1.90	40	98.3%	349,950	12.9%	389,521	15.9%
May-22	134	-24%	164	-15%	0.82	236	-19%	1.76	29	98.6%	330,000	4.8%	361,123	5.5%
Jun-22	105	-26%	162	1%	0.65	265	-6%	2.52	33	98.4%	315,000	3.3%	359,140	8.1%
Jul-22	108	10%	162	25%	0.67	286	-1%	2.65	38	97.5%	330,000	6.1%	349,663	5.2%
Aug-22	100	0%	157	6%	0.64	304	0%	3.04	35	97.4%	312,950	5.5%	337,663	1.4%
Sep-22	75	-17%	114	-19%	0.66	300	-6%	4.00	49	96.5%	352,000	14.5%	380,203	12.0%
Oct-22	74	-26%	127	-14%	0.58	291	-9%	3.93	48	96.1%	289,500	-8.0%	356,565	4.7%
Nov-22	77	-20%	72	-33%	1.07	238	-14%	3.09	49	96.9%	319,000	-0.3%	342,335	-4.3%
Dec-22	31	-59%	40	-38%	0.78	203	-6%	6.55	71	96.2%	345,000	19.0%	378,190	26.1%
2022	1,104	-16%	1,502	-11%	0.74	247	-14%	3.05	43	97.5%	320,000	3.2%	354,118	4.6%
Jan-23	52	-19%	83	-5%	0.63	198	-4%	3.81	62	96.3%	287,500	-3.8%	340,837	10.6%
Feb-23	70	-21%	103	-1%	0.68	207	2%	2.96	58	96.6%	296,250	0.4%	327,570	-7.7%
Mar-23	90	-28%	129	-13%	0.70	217	6%	2.41	43	97.2%	278,250	-11.7%	327,829	-1.2%
Apr-23	79	-35%	115	-30%	0.69	228	-2%	2.89	40	97.5%	353,000	0.9%	380,121	-2.4%
May-23	125	-7%	161	-2%	0.78	234	-1%	1.87	44	97.7%	343,500	4.1%	387,084	7.2%
Jun-23	103	-2%	152	-6%	0.68	252	-5%	2.45	34	97.4%	322,500	2.4%	354,712	-1.2%
Jul-23	89	-18%	113	-30%	0.79	250	-13%	2.81	47	97.4%	333,000	0.9%	384,601	10.0%
Aug-23	106	6%	165	5%	0.64	277	-9%	2.61	43	97.2%	338,950	8.3%	371,748	10.1%
Sep-23	95	27%	132	16%	0.72	279	-7%	2.94	40	96.0%	335,000	-4.8%	386,547	1.7%
Oct-23	80	8%	104	-18%	0.77	261	-10%	3.26	51	97.4%	360,000	24.4%	380,914	6.8%
Nov-23														
Dec-23														
2023	889	-11%	1,257	-10%	0.71	240	-4%	2.80	45	97.2%	325,000	1.6%	367,033	3.5%

CENSUS DIVISION 1

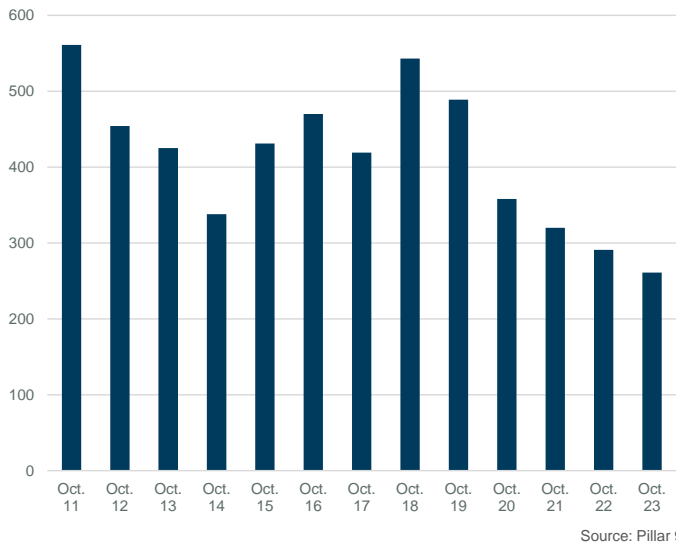
MONTHS OF SUPPLY AND PRICE CHANGE



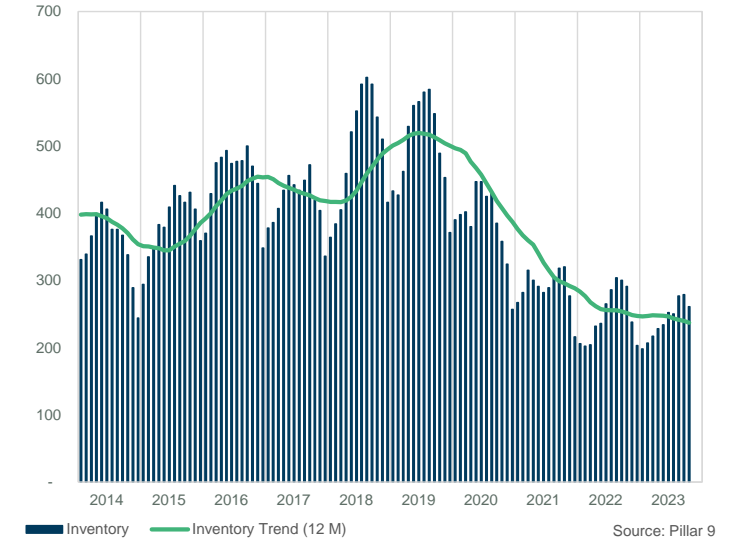
INVENTORY, SALES, AND PRICE



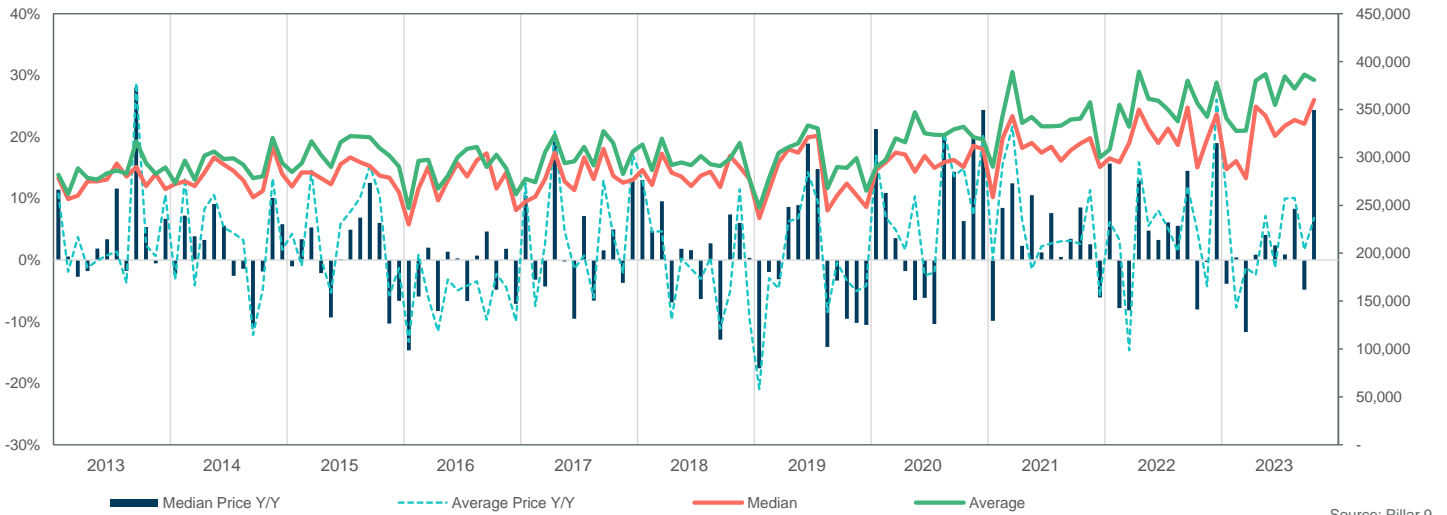
INVENTORY



INVENTORY



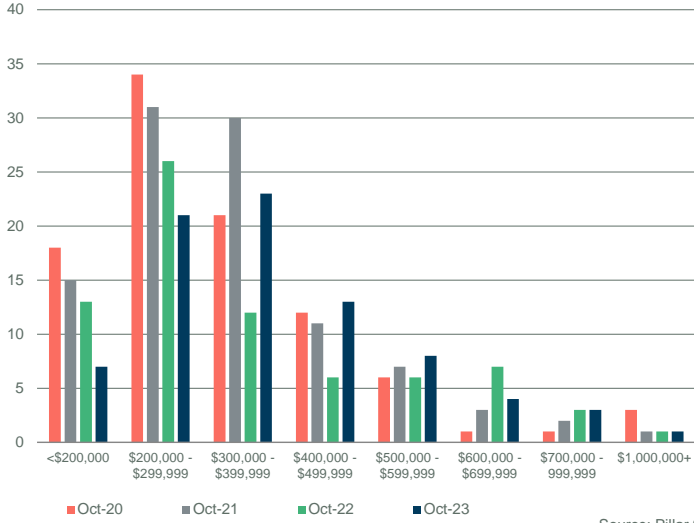
PRICE COMPARISON



CENSUS DIVISION 1

SALES BY PRICE RANGE

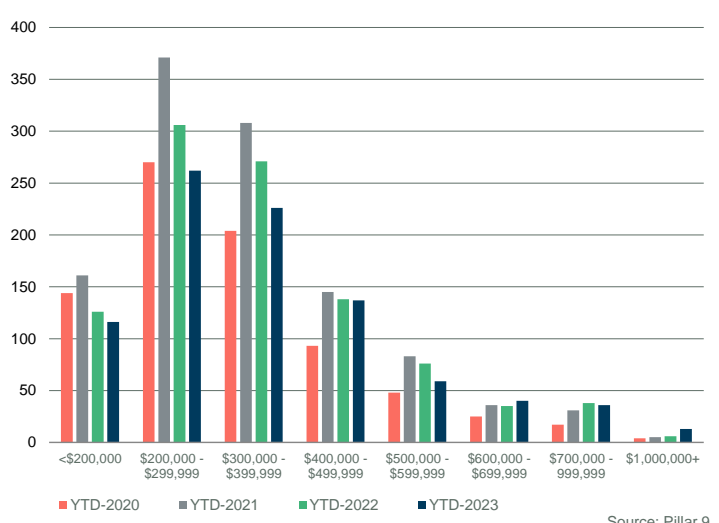
October



Source: Pillar 9

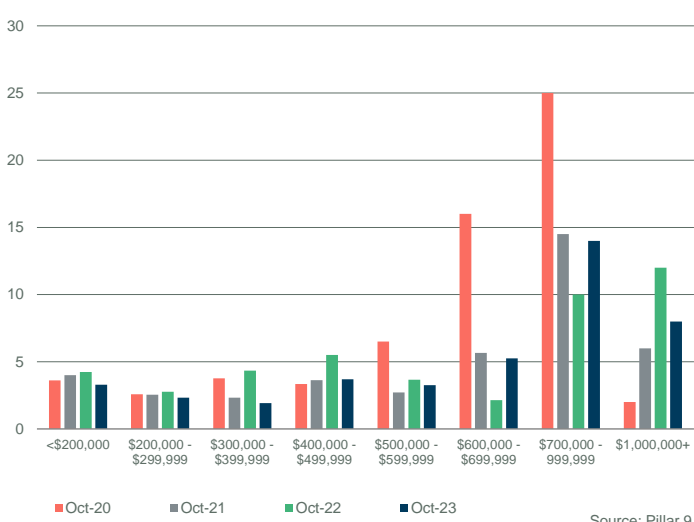
YTD SALES BY PRICE RANGE

YTD-OCT



Source: Pillar 9

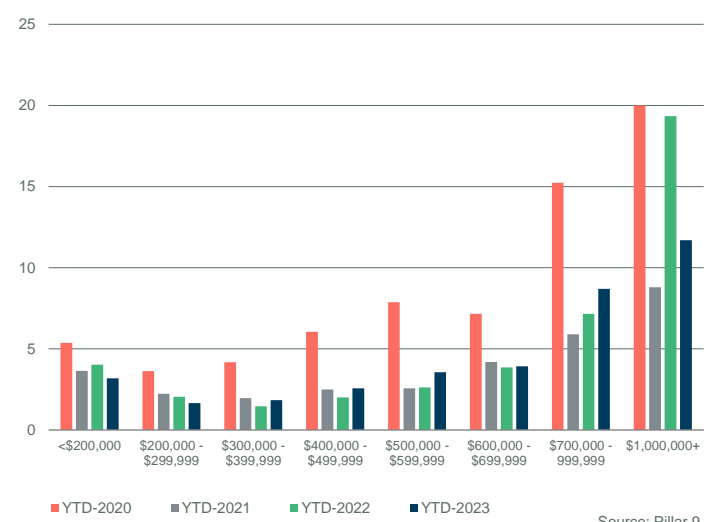
MONTHS OF SUPPLY BY PRICE RANGE



Source: Pillar 9

YTD MONTHS OF SUPPLY BY PRICE RANGE

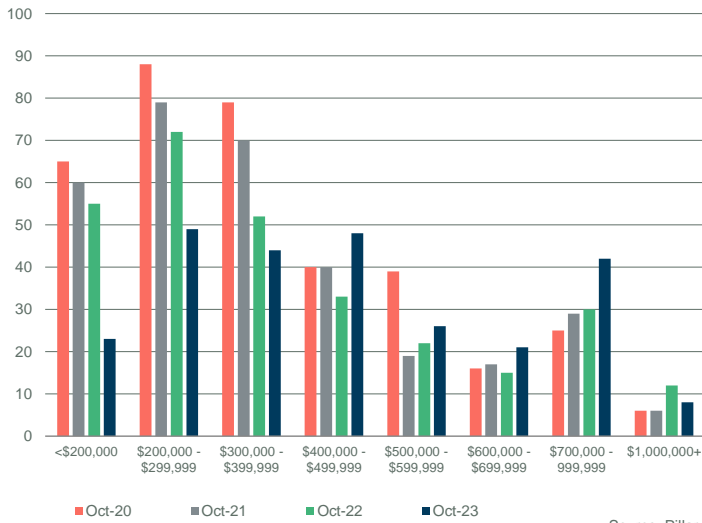
YTD-OCT



Source: Pillar 9

INVENTORY BY PRICE RANGE

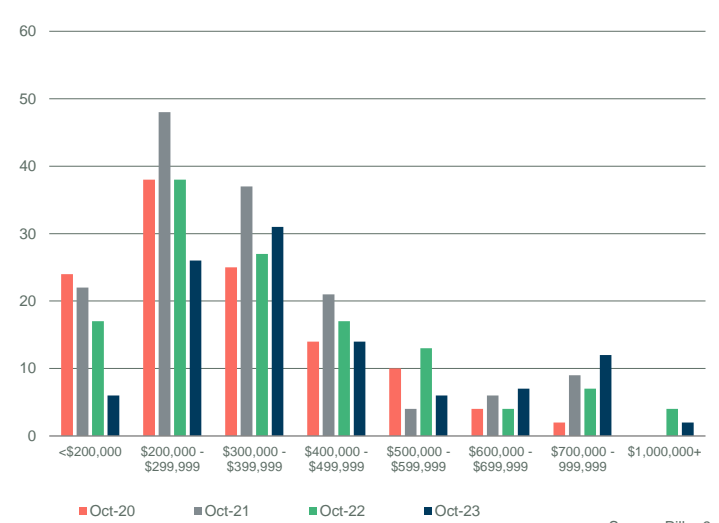
October



Source: Pillar 9

NEW LISTINGS BY PRICE RANGE

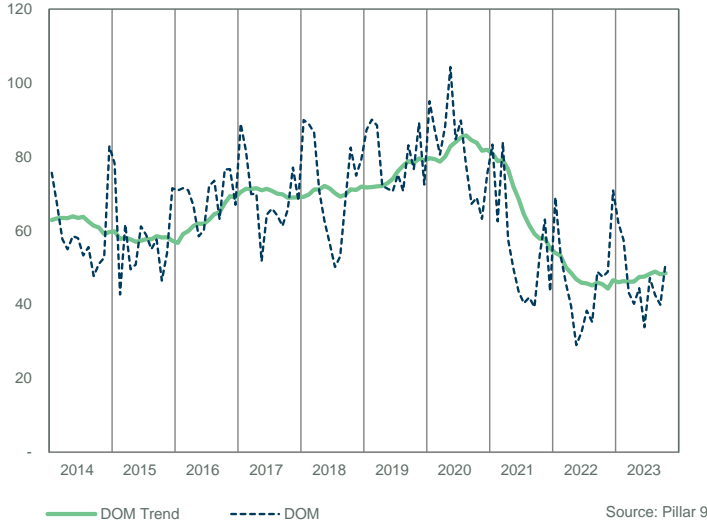
October



Source: Pillar 9

CENSUS DIVISION 1

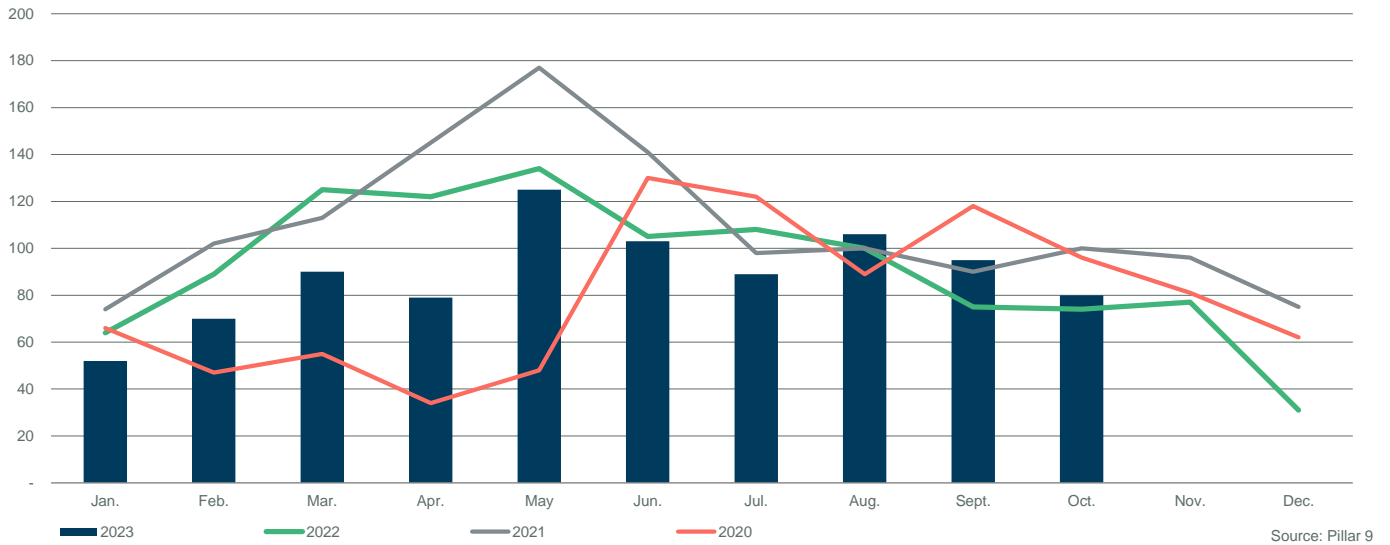
DAYS ON MARKET



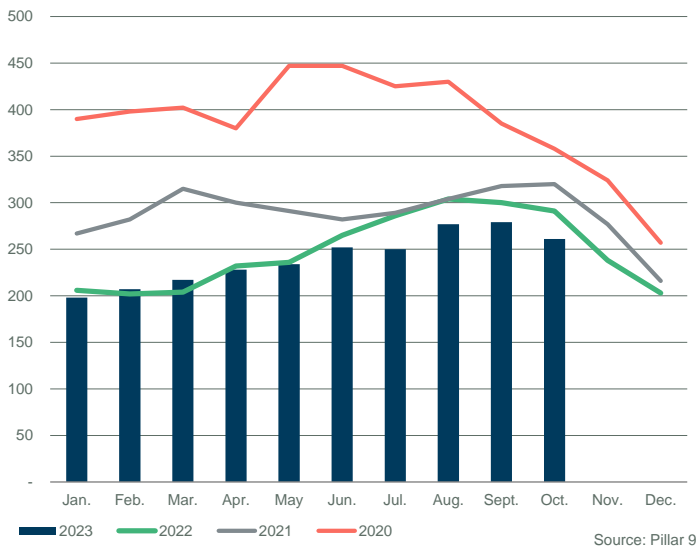
SALES TO NEW LISTINGS RATIO



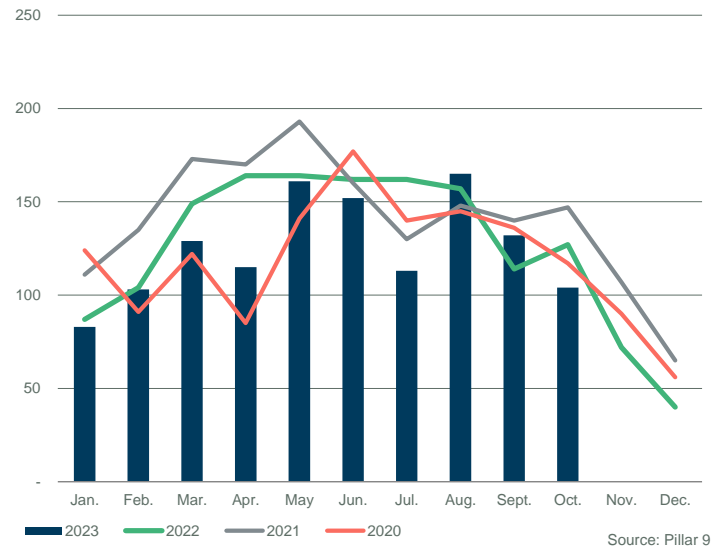
SALES COMPARISON



INVENTORY COMPARISON



NEW LISTINGS COMPARISON

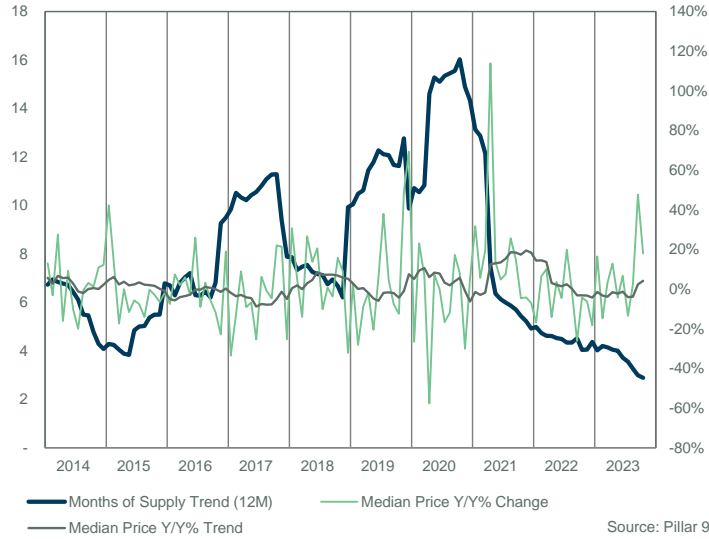


CENSUS DIVISION 1														
Sales	Y/Y%	New Listings	Y/Y%	S/NL Ratio	Inventory	Y/Y%	Months of Supply	DOM	SP/LP	Median Price	Y/Y%	Average Price	Y/Y%	
Jan-14	8	33%	10	-52%	0.80	36	-40%	4.50	118	95.6%	152,000	13.0%	164,250	15.3%
Feb-14	4	-50%	10	-23%	0.40	40	-33%	10.00	88	96.6%	167,000	-3.2%	184,250	2.4%
Mar-14	8	-11%	12	-25%	0.67	39	-29%	4.88	88	95.2%	185,000	27.6%	181,750	14.3%
Apr-14	10	0%	21	75%	0.48	44	-15%	4.40	110	95.1%	156,000	-16.1%	166,700	-12.9%
May-14	13	0%	21	-9%	0.62	49	-14%	3.77	64	96.5%	190,000	9.2%	191,885	-12.6%
Jun-14	16	45%	12	-60%	1.33	41	-39%	2.56	60	96.5%	159,000	-10.2%	171,781	-2.0%
Jul-14	13	18%	7	-53%	1.86	25	-60%	1.92	48	96.0%	168,000	-20.0%	170,115	-15.8%
Aug-14	8	33%	17	-26%	0.47	33	-52%	4.13	50	96.3%	185,750	-0.6%	192,500	-12.5%
Sep-14	12	-33%	19	90%	0.63	34	-41%	2.83	37	96.3%	182,000	3.1%	177,679	-0.6%
Oct-14	19	217%	12	33%	1.58	25	-57%	1.32	157	95.3%	160,000	1.3%	160,789	-2.8%
Nov-14	5	0%	5	-44%	1.00	23	-56%	4.60	75	97.3%	167,500	10.9%	176,300	1.2%
Dec-14	4	-33%	1	-67%	4.00	16	-59%	4.00	93	96.2%	175,500	12.2%	195,000	23.2%
2014	120	10%	147	-20%	0.82	34	-41%	4.08	84	96.0%	169,000	-2.9%	175,126	-4.5%
Jan-15	4	-50%	19	90%	0.21	28	-22%	7.00	28	97.3%	216,250	42.3%	215,000	30.9%
Feb-15	4	0%	20	100%	0.20	38	-5%	9.50	27	94.8%	189,500	13.5%	181,500	-1.5%
Mar-15	13	63%	9	-25%	1.44	33	-15%	2.54	71	96.3%	153,000	-17.3%	173,569	-4.5%
Apr-15	14	40%	16	-24%	0.88	33	-25%	2.36	42	96.3%	155,875	-0.1%	159,439	-4.4%
May-15	11	-15%	16	-24%	0.69	36	-27%	3.27	36	96.2%	168,000	-11.6%	173,923	-9.4%
Jun-15	3	-81%	17	42%	0.18	44	7%	14.67	79	94.8%	150,000	-5.7%	150,333	-12.5%
Jul-15	12	-8%	18	157%	0.67	46	84%	3.83	71	95.9%	155,250	-7.6%	149,208	-12.3%
Aug-15	10	25%	10	-41%	1.00	43	30%	4.30	102	96.1%	159,725	-14.0%	188,975	-1.8%
Sep-15	6	-50%	16	-16%	0.38	42	24%	7.00	70	96.4%	181,500	-0.3%	172,333	-3.0%
Oct-15	13	-32%	15	25%	0.87	37	48%	2.85	107	95.3%	155,500	-2.8%	165,846	3.1%
Nov-15	8	60%	13	160%	0.62	37	61%	4.63	49	94.9%	156,750	-6.4%	186,938	6.0%
Dec-15	2	-50%	10	900%	0.20	39	144%	19.50	38	97.1%	172,250	-1.9%	172,250	-11.7%
2015	100	-17%	179	22%	0.56	38	25%	6.79	65	95.9%	159,000	-5.9%	171,490	-2.1%
Jan-16	7	75%	17	-11%	0.41	42	50%	6.00	65	92.7%	200,000	-7.5%	187,286	-12.9%
Feb-16	9	125%	9	-55%	1.00	41	8%	4.56	54	95.2%	203,500	7.4%	197,500	8.8%
Mar-16	6	-54%	19	111%	0.32	52	58%	8.67	91	96.5%	156,000	2.0%	171,567	-1.2%
Apr-16	11	-21%	25	56%	0.44	57	73%	5.18	28	96.3%	165,000	5.9%	202,227	26.8%
May-16	11	0%	17	6%	0.65	59	64%	5.36	69	95.3%	163,000	-3.0%	163,409	-6.0%
Jun-16	15	400%	16	-6%	0.94	55	25%	3.67	65	94.9%	189,000	26.0%	203,133	35.1%
Jul-16	14	17%	15	-17%	0.93	50	9%	3.57	96	95.5%	141,250	-9.0%	153,243	2.7%
Aug-16	8	-20%	20	100%	0.40	51	19%	6.38	58	96.2%	165,000	3.3%	167,438	-11.4%
Sep-16	13	117%	17	6%	0.76	53	26%	4.08	120	95.7%	171,000	-5.8%	183,077	6.2%
Oct-16	6	-54%	19	27%	0.32	61	65%	10.17	74	94.7%	137,250	-11.7%	147,417	-11.1%
Nov-16	2	-75%	15	15%	0.13	68	84%	34.00	19	97.4%	120,875	-22.9%	120,875	-35.3%
Dec-16	3	50%	8	-20%	0.38	67	72%	22.33	131	94.8%	205,000	19.0%	247,333	43.6%
2016	105	5%	197	10%	0.53	55	46%	9.50	74	95.4%	165,000	3.8%	180,191	5.1%
Jan-17	7	0%	17	0%	0.41	70	67%	10.00	97	91.6%	133,000	-33.5%	137,393	-26.6%
Feb-17	6	-33%	18	100%	0.33	77	88%	12.83	103	96.3%	177,500	-12.8%	189,233	-4.2%
Mar-17	12	100%	16	-16%	0.75	77	48%	6.42	92	96.1%	170,000	9.0%	175,833	2.5%
Apr-17	20	82%	32	28%	0.63	76	33%	3.80	94	96.0%	150,000	-9.1%	163,920	-18.9%
May-17	11	0%	25	47%	0.44	86	46%	7.82	131	95.0%	152,000	-6.7%	156,218	-4.4%
Jun-17	16	7%	19	19%	0.84	84	53%	5.25	55	95.0%	141,000	-25.4%	162,900	-19.8%
Jul-17	12	-14%	20	33%	0.60	79	58%	6.58	92	95.8%	150,000	6.2%	162,300	5.9%
Aug-17	8	0%	19	-5%	0.42	78	53%	9.75	79	95.2%	163,750	-0.8%	173,375	3.5%
Sep-17	11	-15%	12	-29%	0.92	70	32%	6.36	123	95.2%	163,000	-4.7%	166,682	-9.0%
Oct-17	7	17%	16	-16%	0.44	72	18%	10.29	132	93.9%	167,500	22.0%	202,357	37.3%
Nov-17	6	200%	14	-7%	0.43	67	-1%	11.17	162	95.6%	146,750	21.4%	168,067	39.0%
Dec-17	11	267%	5	-38%	2.20	47	-30%	4.27	75	96.0%	153,250	-25.2%	186,477	-24.6%
2017	127	21%	213	8%	0.60	74	39%	7.88	98	95.3%	155,000	-6.1%	168,934	-6.2%
Jan-18	5	-29%	13	-24%	0.38	49	-30%	9.80	87	92.5%	174,000	30.8%	157,350	14.5%
Feb-18	9	50%	24	33%	0.38	59	-23%	6.56	58	95.3%	186,500	5.1%	219,889	16.2%
Mar-18	8	-33%	17	6%	0.47	64	-17%	8.00	75	96.9%	146,150	-14.0%	164,788	-6.3%
Apr-18	13	-35%	18	-44%	0.72	61	-20%	4.69	117	94.4%	190,000	26.7%	193,685	18.2%
May-18	13	18%	16	-36%	0.81	56	-35%	4.31	75	96.8%	173,000	13.8%	172,377	10.3%
Jun-18	13	-19%	19	0%	0.68	55	-35%	4.23	81	95.6%	170,000	20.6%	187,346	15.0%
Jul-18	10	-17%	19	-5%	0.53	61	-23%	6.10	91	95.3%	134,750	-10.2%	148,790	-8.3%
Aug-18	12	50%	20	5%	0.60	62	-21%	5.17	70	95.8%	165,000	0.8%	179,208	3.4%
Sep-18	8	-27%	21	75%	0.38	70	0%	8.75	77	96.0%	157,000	-3.7%	196,625	18.0%
Oct-18	10	43%	16	0%	0.63	70	-3%	7.00	89	94.2%	194,000	15.8%	195,900	-3.2%
Nov-18	11	83%	16	14%	0.69	61	-9%	5.55	64	96.4%	160,000	9.0%	178,818	6.4%
Dec-18	1	-91%	11	120%	0.09	49	4%	49.00	104	93.7%	104,000	-32.1%	104,000	-44.2%
2018	113	-11%	210	-1%	0.54	60	-18%	9.93	81	95.5%	168,500	8.7%	181,591	7.5%

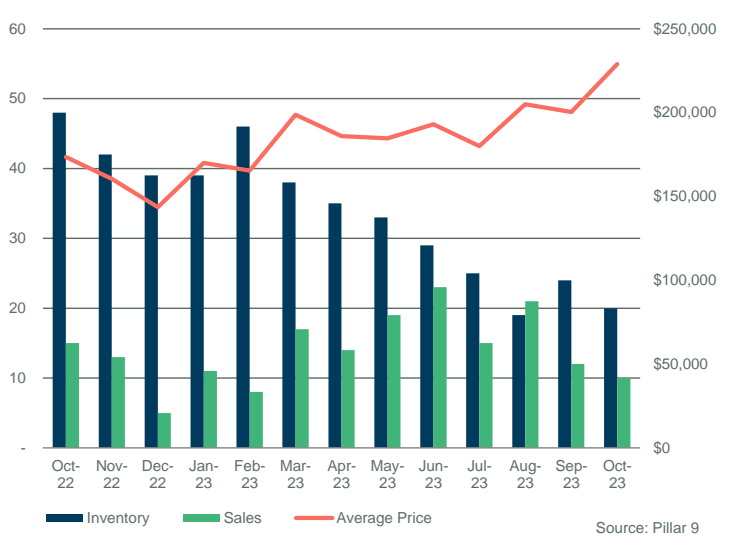
CENSUS DIVISION 1														
	Sales	Y/Y%	New Listings	Y/Y%	S/NL Ratio	Inventory	Y/Y%	Months of Supply	DOM	SP/LP	Median Price	Y/Y%	Average Price	Y/Y%
Jan-19	5	0%	16	23%	0.31	56	14%	11.20	90	93.6%	178,500	2.6%	160,200	1.8%
Feb-19	5	-44%	11	-54%	0.45	59	0%	11.80	66	94.7%	134,000	-28.2%	168,100	-23.6%
Mar-19	6	-25%	15	-12%	0.40	58	-9%	9.67	106	94.3%	133,125	-8.9%	139,708	-15.2%
Apr-19	5	-62%	28	56%	0.18	73	20%	14.60	85	96.0%	186,500	-1.8%	193,100	-0.3%
May-19	8	-38%	8	-50%	1.00	67	20%	8.38	97	94.6%	137,500	-20.5%	177,219	2.8%
Jun-19	7	-46%	16	-16%	0.44	70	27%	10.00	89	94.1%	180,000	5.9%	184,857	-1.3%
Jul-19	16	60%	22	16%	0.73	68	11%	4.25	90	95.2%	186,000	38.0%	184,900	24.3%
Aug-19	14	17%	21	5%	0.67	65	5%	4.64	88	94.9%	172,500	4.5%	169,429	-5.5%
Sep-19	14	75%	11	-48%	1.27	55	-21%	3.93	63	95.2%	145,000	-7.6%	157,314	-20.0%
Oct-19	9	-10%	19	19%	0.47	58	-17%	6.44	164	94.6%	170,000	-12.4%	179,389	-8.4%
Nov-19	3	-73%	10	-38%	0.30	58	-5%	19.33	115	96.0%	239,000	49.4%	207,667	16.1%
Dec-19	4	300%	12	9%	0.33	57	16%	14.25	68	96.4%	176,000	69.2%	167,250	60.8%
2019	96	-15%	189	-10%	0.51	62	5%	9.87	93	94.9%	171,250	1.6%	172,878	-4.8%
Jan-20	3	-40%	17	6%	0.18	64	14%	21.33	65	95.7%	131,000	-26.6%	161,500	0.8%
Feb-20	7	40%	18	64%	0.39	68	15%	9.71	43	95.5%	165,000	23.1%	156,357	-7.0%
Mar-20	5	-17%	11	-27%	0.45	65	12%	13.00	200	94.7%	142,000	6.7%	150,100	7.4%
Apr-20	1	-80%	9	-68%	0.11	60	-18%	60.00	23	90.8%	79,000	-57.6%	79,000	-59.1%
May-20	4	-50%	17	113%	0.24	66	-1%	16.50	72	93.4%	147,500	7.3%	138,500	-21.8%
Jun-20	9	29%	21	31%	0.43	70	0%	7.78	144	95.6%	180,000	0.0%	166,378	-10.0%
Jul-20	10	-38%	21	-5%	0.48	72	6%	7.20	103	95.3%	155,000	-16.7%	169,950	-8.1%
Aug-20	12	-14%	18	-14%	0.67	71	9%	5.92	117	93.8%	152,000	-11.9%	156,167	-7.8%
Sep-20	13	-7%	19	73%	0.68	67	22%	5.15	85	93.9%	170,000	17.2%	183,438	16.6%
Oct-20	6	-33%	18	-5%	0.33	73	26%	12.17	119	93.6%	183,500	7.9%	191,167	6.6%
Nov-20	13	333%	19	90%	0.68	73	26%	5.62	92	95.2%	167,000	-30.1%	171,985	-17.2%
Dec-20	8	100%	5	-58%	1.60	61	7%	7.63	161	95.8%	185,500	5.4%	190,250	13.8%
2020	91	-5%	193	2%	0.47	68	10%	14.33	108	94.7%	160,000	-6.6%	168,384	-2.6%
Jan-21	8	167%	13	-24%	0.62	55	-14%	6.88	81	96.1%	172,500	31.7%	186,875	15.7%
Feb-21	8	14%	13	-28%	0.62	53	-22%	6.63	91	95.3%	174,375	5.7%	219,719	40.5%
Mar-21	13	160%	22	100%	0.59	56	-14%	4.31	95	93.9%	170,000	19.7%	169,308	12.8%
Apr-21	15	1400%	16	78%	0.94	55	-8%	3.67	126	96.3%	169,000	113.9%	184,250	133.2%
May-21	17	325%	23	35%	0.74	57	-14%	3.35	91	97.2%	167,500	13.6%	184,474	33.2%
Jun-21	11	22%	19	-10%	0.58	56	-20%	5.09	42	97.1%	188,500	4.7%	199,673	20.0%
Jul-21	10	0%	16	-24%	0.63	55	-24%	5.50	70	95.1%	166,750	7.6%	163,050	-4.1%
Aug-21	12	0%	16	-11%	0.75	53	-25%	4.42	62	96.6%	191,000	25.7%	201,075	28.8%
Sep-21	17	31%	22	16%	0.77	53	-21%	3.12	75	95.6%	195,000	14.7%	210,712	14.9%
Oct-21	6	0%	13	-28%	0.46	54	-26%	9.00	69	96.8%	175,000	-4.6%	177,583	-7.1%
Nov-21	15	15%	13	-32%	1.15	46	-37%	3.07	70	95.0%	160,000	-4.2%	157,577	-8.4%
Dec-21	10	25%	11	120%	0.91	40	-34%	4.00	90	94.2%	172,500	-7.0%	164,650	-13.5%
2021	142	56%	197	2%	0.72	53	-22%	4.92	82	95.8%	175,750	9.8%	184,867	9.8%
Jan-22	6	-25%	15	15%	0.40	46	-16%	7.67	66	92.1%	143,600	-16.8%	161,783	-13.4%
Feb-22	12	50%	13	0%	0.92	43	-19%	3.58	97	96.4%	185,750	6.5%	198,667	-9.6%
Mar-22	15	15%	23	5%	0.65	45	-20%	3.00	52	96.1%	187,000	10.0%	182,153	7.6%
Apr-22	13	-13%	17	6%	0.76	46	-16%	3.54	45	89.2%	145,000	-14.2%	134,443	-27.0%
May-22	17	0%	18	-22%	0.94	40	-30%	2.35	70	96.5%	173,500	3.6%	184,088	-0.2%
Jun-22	11	0%	26	37%	0.42	51	-9%	4.64	50	96.1%	180,000	-4.5%	180,445	-9.6%
Jul-22	13	30%	18	13%	0.72	48	-13%	3.69	83	96.6%	200,000	19.9%	247,008	51.5%
Aug-22	11	-8%	15	-6%	0.73	48	-9%	4.36	46	94.6%	190,000	-0.5%	201,764	0.3%
Sep-22	10	-41%	19	-14%	0.53	53	0%	5.30	72	95.2%	144,000	-26.2%	153,750	-27.0%
Oct-22	15	150%	14	8%	1.07	48	-11%	3.20	69	95.8%	167,500	-4.3%	173,593	-2.2%
Nov-22	13	-13%	10	-23%	1.30	42	-9%	3.23	64	96.7%	150,000	-6.3%	160,500	1.9%
Dec-22	5	-50%	7	-36%	0.71	39	-3%	7.80	50	96.0%	141,000	-18.3%	143,600	-12.8%
2022	141	-1%	195	-1%	0.72	46	-13%	4.36	64	95.3%	167,500	-4.7%	179,614	-2.8%
Jan-23	11	83%	14	-7%	0.79	39	-15%	3.55	112	94.3%	167,250	16.5%	170,023	5.1%
Feb-23	8	-33%	18	38%	0.44	46	7%	5.75	70	97.8%	158,500	-14.7%	165,363	-16.8%
Mar-23	17	13%	13	-43%	1.31	38	-16%	2.24	66	95.9%	193,000	3.2%	198,782	9.1%
Apr-23	14	8%	15	-12%	0.93	35	-24%	2.50	81	96.7%	163,750	12.9%	186,029	38.4%
May-23	19	12%	21	17%	0.90	33	-18%	1.74	60	96.2%	166,000	-4.3%	184,646	0.3%
Jun-23	23	109%	23	-12%	1.00	29	-43%	1.26	37	96.8%	192,000	6.7%	193,061	7.0%
Jul-23	15	15%	14	-22%	1.07	25	-48%	1.67	43	96.7%	173,000	-13.5%	180,093	-27.1%
Aug-23	21	91%	17	13%	1.24	19	-60%	0.90	46	97.2%	195,000	2.6%	204,986	1.6%
Sep-23	12	20%	18	-5%	0.67	24	-55%	2.00	36	96.5%	212,500	47.6%	200,383	30.3%
Oct-23	10	-33%	9	-36%	1.11	20	-58%	2.00	50	97.1%	197,500	17.9%	228,950	31.9%
Nov-23														
Dec-23														
2023	150	22%	162	-9%	0.93	31	-33%	2.36	57	96.5%	179,450	2.3%	192,172	5.0%

CENSUS DIVISION 1

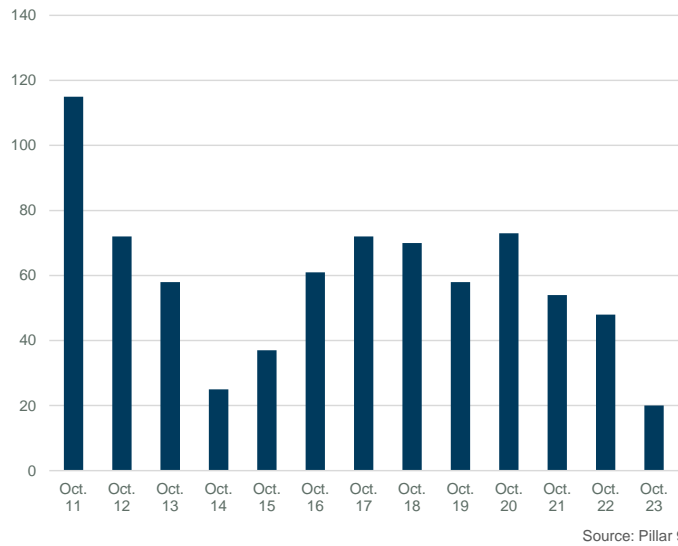
MONTHS OF SUPPLY AND PRICE CHANGE



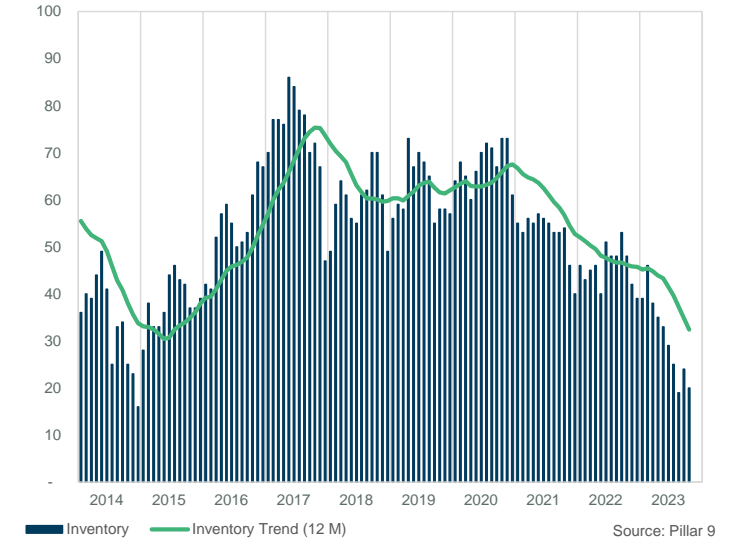
INVENTORY, SALES, AND PRICE



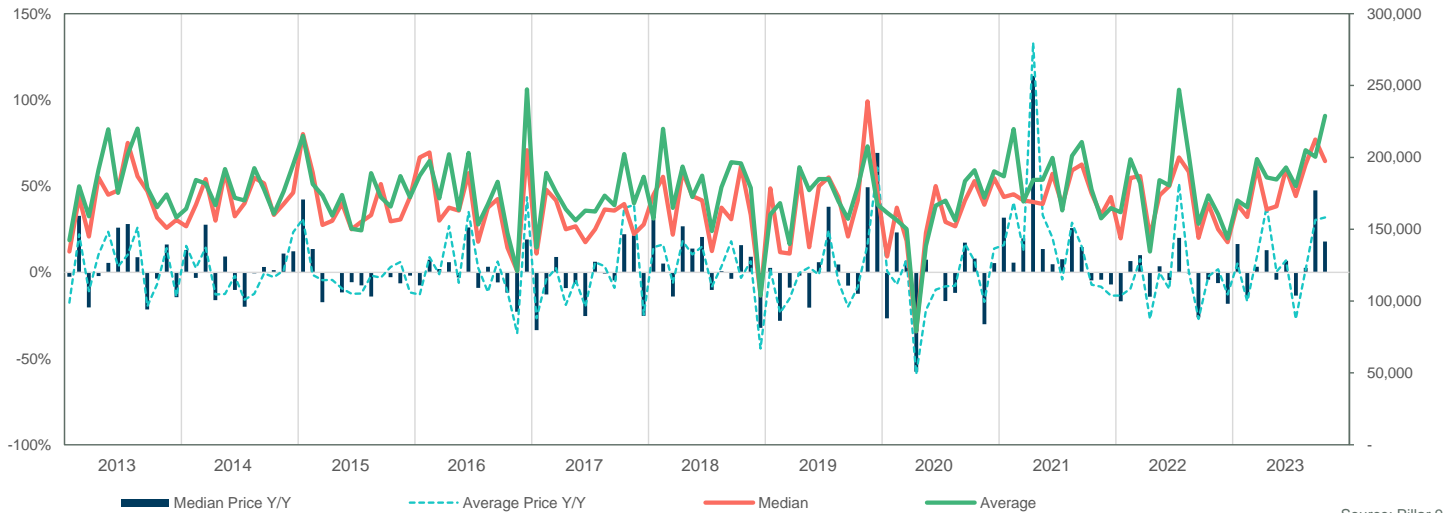
INVENTORY



INVENTORY



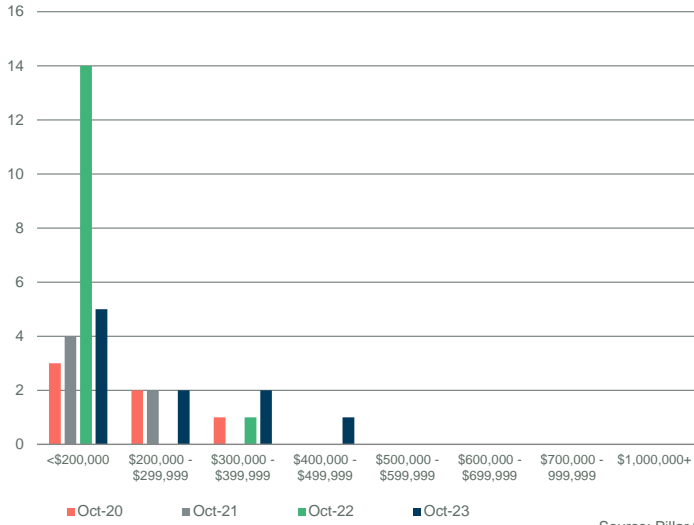
PRICE COMPARISON



CENSUS DIVISION 1

SALES BY PRICE RANGE

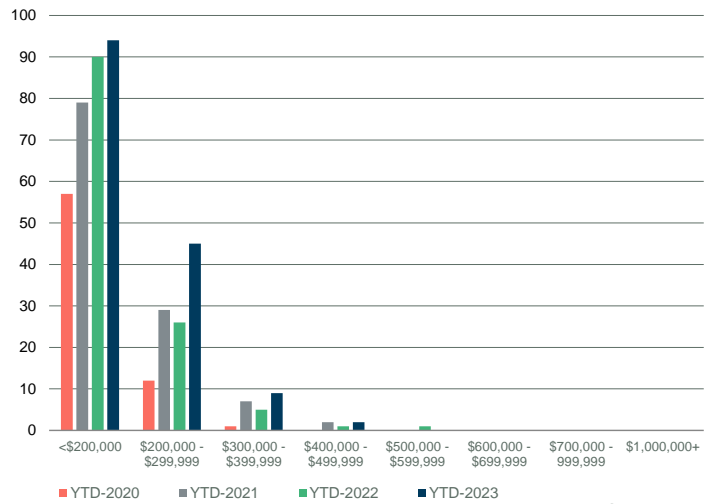
October



Source: Pillar 9

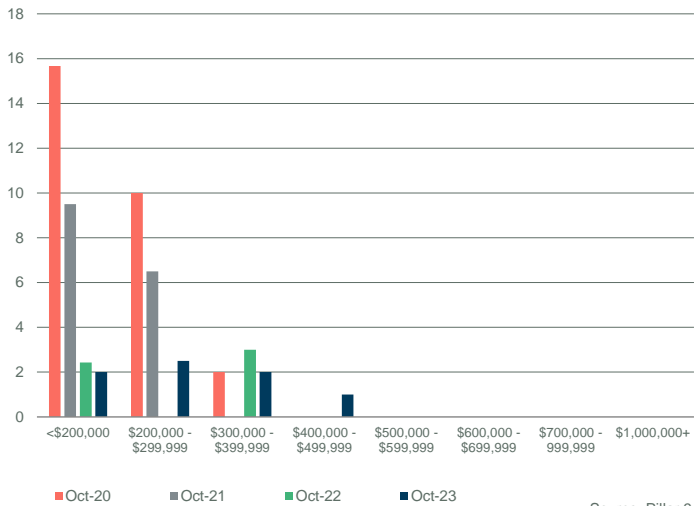
YTD SALES BY PRICE RANGE

YTD-OCT



Source: Pillar 9

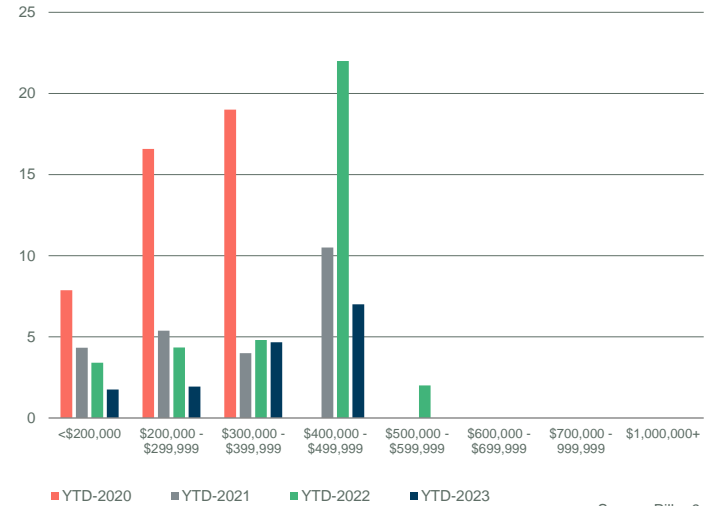
MONTHS OF SUPPLY BY PRICE RANGE



Source: Pillar 9

YTD MONTHS OF SUPPLY BY PRICE RANGE

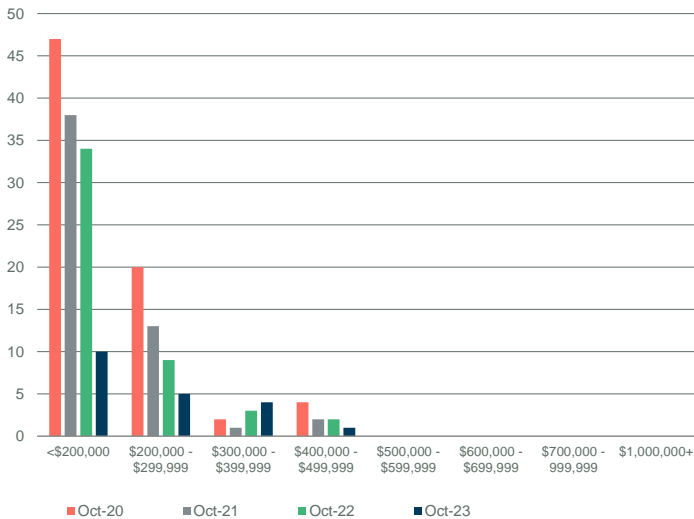
YTD-OCT



Source: Pillar 9

INVENTORY BY PRICE RANGE

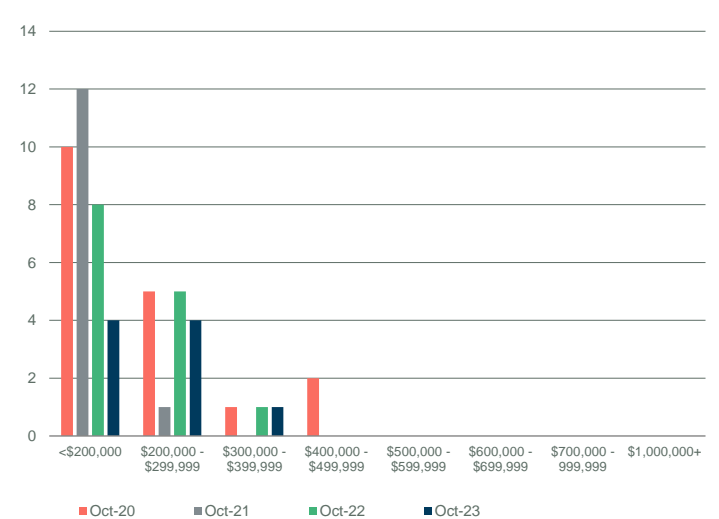
October



Source: Pillar 9

NEW LISTINGS BY PRICE RANGE

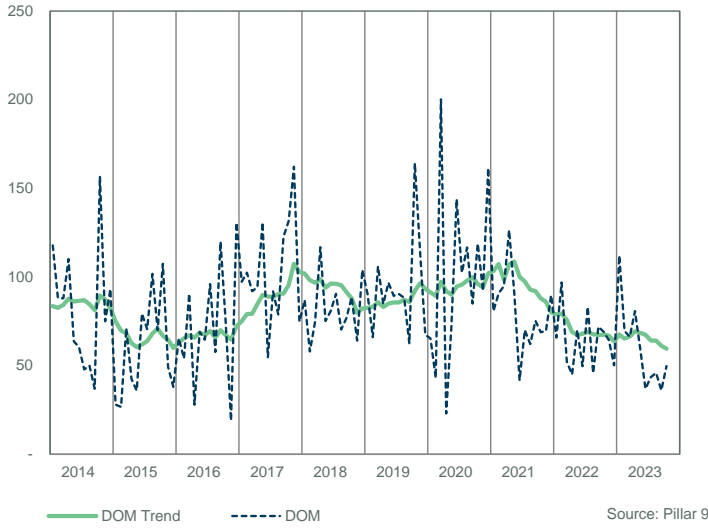
October



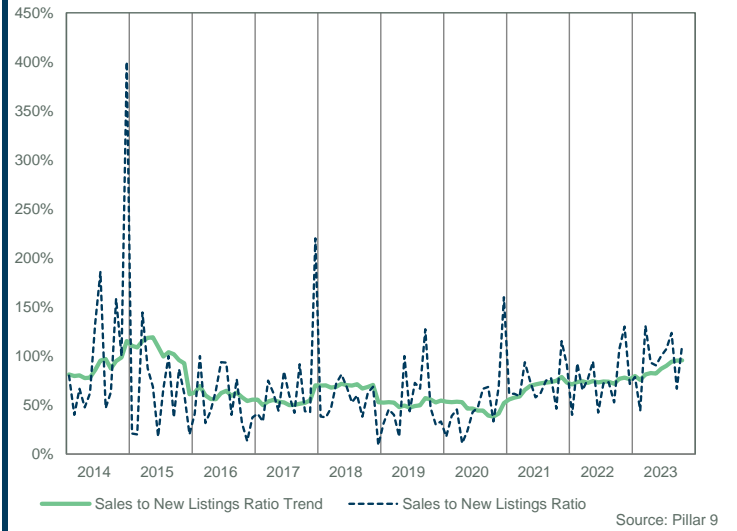
Source: Pillar 9

CENSUS DIVISION 1

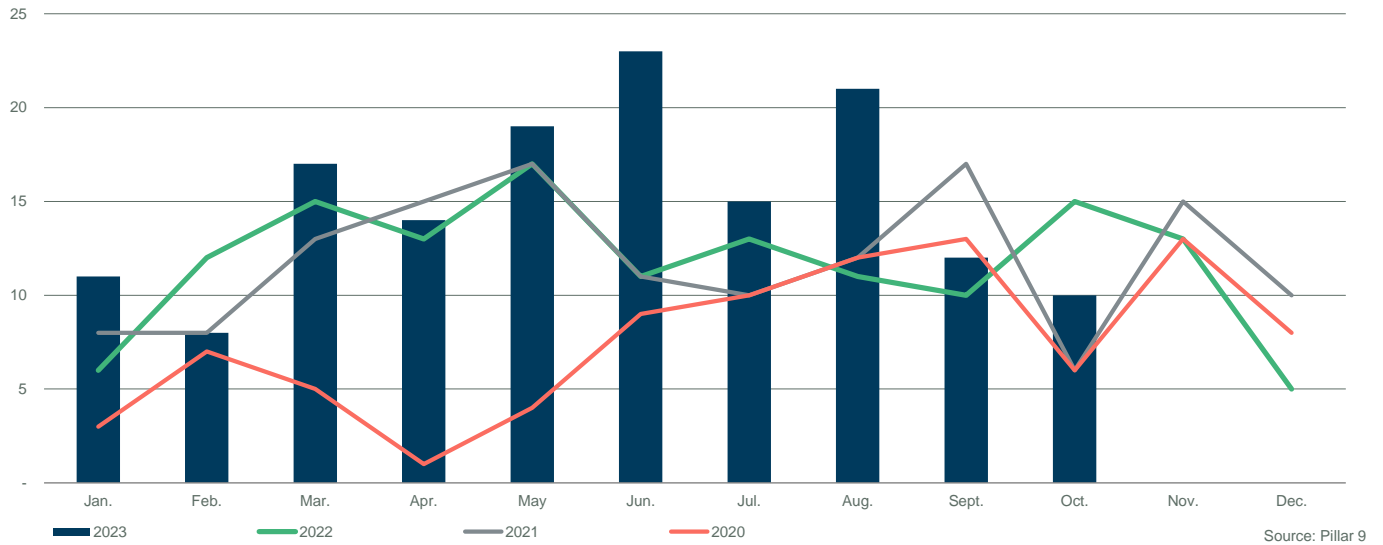
DAYS ON MARKET



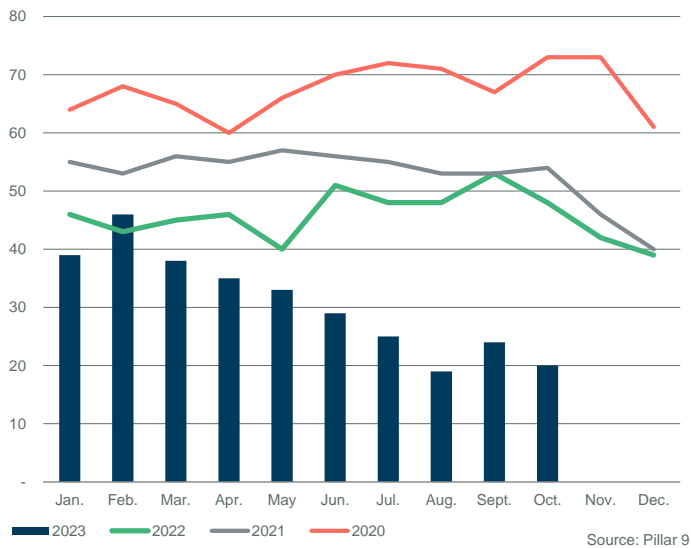
SALES TO NEW LISTINGS RATIO



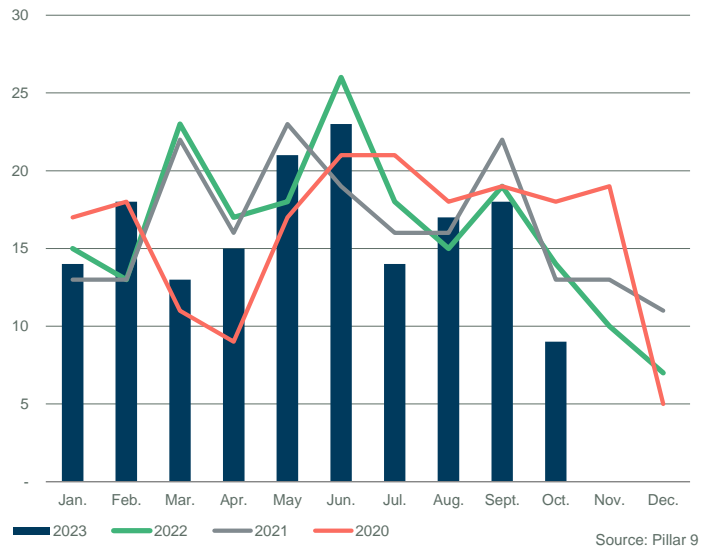
SALES COMPARISON



INVENTORY COMPARISON



NEW LISTINGS COMPARISON

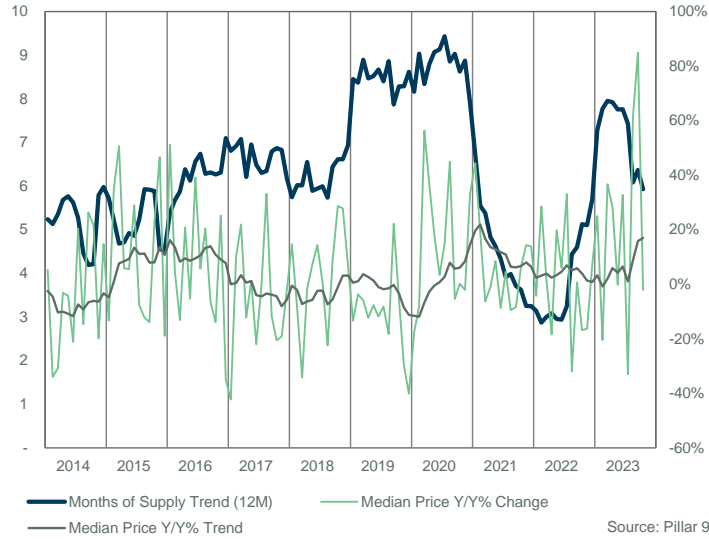


CENSUS DIVISION 1														
	Sales	Y/Y%	New Listings	Y/Y%	S/NL Ratio	Inventory	Y/Y%	Months of Supply	DOM	SP/LP	Median Price	Y/Y%	Average Price	Y/Y%
Jan-14	2	100%	5	-50%	0.40	12	-45%	6.00	47	98.4%	300,000	5.3%	300,000	5.3%
Feb-14	2	-33%	6	-40%	0.33	14	-44%	7.00	33	97.1%	191,375	-34.0%	191,375	-33.2%
Mar-14	2	-60%	8	-27%	0.25	17	-41%	8.50	58	95.7%	183,500	-30.8%	183,500	-28.7%
Apr-14	3	-75%	6	-50%	0.50	18	-28%	6.00	85	97.2%	220,000	-3.2%	221,667	-6.2%
May-14	6	-50%	6	-40%	1.00	16	-20%	2.67	44	97.7%	239,850	-4.3%	215,408	-24.7%
Jun-14	6	50%	15	150%	0.40	23	5%	3.83	40	95.7%	195,000	-21.2%	209,917	-20.1%
Jul-14	13	225%	16	33%	0.81	26	4%	2.00	38	97.2%	266,500	20.3%	261,250	22.7%
Aug-14	7	250%	9	50%	0.78	26	-4%	3.71	41	98.4%	220,000	-14.7%	243,579	-5.6%
Sep-14	10	150%	10	100%	1.00	21	0%	2.10	87	98.3%	290,500	26.3%	319,921	19.1%
Oct-14	6	20%	7	-13%	0.86	19	27%	3.17	34	97.7%	262,500	21.5%	303,483	40.0%
Nov-14	1	-75%	5	67%	0.20	22	83%	22.00	21	95.7%	177,000	-19.9%	177,000	-28.3%
Dec-14	4	0%	5	67%	0.80	19	90%	4.75	43	97.0%	261,000	14.7%	262,250	22.5%
2014	62	3%	98	2%	0.63	19	2%	5.98	50	97.4%	248,900	5.9%	256,679	1.8%
Jan-15	7	250%	9	80%	0.78	20	67%	2.86	81	98.1%	260,000	-13.3%	272,200	-9.3%
Feb-15	13	550%	8	33%	1.63	14	0%	1.08	46	97.1%	258,000	34.8%	277,215	44.9%
Mar-15	6	200%	6	-25%	1.00	12	-29%	2.00	109	97.2%	276,500	50.7%	290,500	58.3%
Apr-15	3	0%	10	67%	0.30	19	6%	6.33	34	97.4%	233,000	5.9%	228,633	3.1%
May-15	5	-17%	13	117%	0.38	26	63%	5.20	68	95.7%	253,000	5.5%	256,200	18.9%
Jun-15	8	33%	13	-13%	0.62	25	9%	3.13	34	97.4%	251,500	29.0%	259,675	23.7%
Jul-15	4	-69%	6	-63%	0.67	26	0%	6.50	51	97.7%	246,000	-7.7%	240,500	-7.9%
Aug-15	2	-71%	7	-22%	0.29	24	-8%	12.00	78	99.2%	193,000	-12.3%	193,000	-20.8%
Sep-15	9	-10%	9	-10%	1.00	18	-14%	2.00	71	96.9%	250,000	-13.9%	283,194	-11.5%
Oct-15	5	-17%	2	-71%	2.50	14	-26%	2.80	30	97.5%	322,000	22.7%	314,300	3.6%
Nov-15	2	100%	3	-40%	0.67	12	-45%	6.00	101	95.2%	259,500	46.6%	259,500	46.6%
Dec-15	2	-50%	2	-60%	1.00	9	-53%	4.50	43	94.6%	211,250	-19.1%	211,250	-19.4%
2015	66	6%	88	-10%	0.75	18	-3%	4.53	60	97.1%	254,000	2.0%	268,277	4.5%
Jan-16	1	-86%	5	-44%	0.20	13	-35%	13.00	126	98.3%	393,000	51.2%	393,000	44.4%
Feb-16	3	-77%	5	-38%	0.60	14	0%	4.67	112	95.2%	269,500	4.5%	256,833	-7.4%
Mar-16	3	-50%	8	33%	0.38	13	8%	4.33	27	95.5%	240,000	-13.2%	240,000	-17.4%
Apr-16	2	-33%	15	50%	0.13	25	32%	12.50	66	97.9%	281,500	20.8%	281,500	23.1%
May-16	12	140%	13	0%	0.92	25	-4%	2.08	43	97.1%	239,500	-5.3%	243,125	-5.1%
Jun-16	3	-63%	5	-62%	0.60	25	0%	8.33	47	94.1%	350,000	39.2%	344,000	32.5%
Jul-16	3	-25%	5	-17%	0.60	26	0%	8.67	123	97.2%	260,000	5.7%	239,833	-0.3%
Aug-16	4	100%	7	0%	0.57	26	8%	6.50	80	94.4%	232,500	20.5%	224,375	16.3%
Sep-16	8	-11%	3	-67%	2.67	19	6%	2.38	57	97.8%	233,475	-6.6%	229,806	-18.9%
Oct-16	5	0%	3	50%	1.67	11	-21%	2.20	51	96.9%	277,000	-14.0%	264,900	-15.7%
Nov-16	2	0%	4	33%	0.50	13	8%	6.50	31	97.7%	324,750	25.1%	324,750	25.1%
Dec-16	1	-50%	6	200%	0.17	14	56%	14.00	22	95.5%	137,500	-34.9%	137,500	-34.9%
2016	47	-29%	79	-10%	0.59	19	5%	7.10	60	96.6%	245,000	-3.5%	254,531	-5.1%
Jan-17	2	100%	7	40%	0.29	19	46%	9.50	204	96.5%	226,750	-42.3%	226,750	-42.3%
Feb-17	4	33%	12	140%	0.33	24	71%	6.00	74	98.4%	295,875	9.8%	317,938	23.8%
Mar-17	4	33%	8	0%	0.50	25	92%	6.25	71	97.3%	292,500	21.9%	271,750	13.2%
Apr-17	9	350%	8	-47%	1.13	19	-24%	2.11	66	96.3%	247,000	-12.3%	275,667	-2.1%
May-17	2	-83%	6	-54%	0.33	22	-12%	11.00	38	94.2%	242,500	1.3%	242,500	-0.3%
Jun-17	9	200%	16	220%	0.56	25	0%	2.78	51	97.3%	272,900	-22.0%	263,689	-23.3%
Jul-17	5	67%	12	140%	0.42	32	23%	6.40	35	97.9%	259,000	-0.4%	242,600	1.2%
Aug-17	4	0%	4	-43%	1.00	28	8%	7.00	102	96.1%	309,500	33.1%	316,500	41.1%
Sep-17	4	-50%	12	300%	0.33	31	63%	7.75	57	95.4%	206,000	-11.8%	223,000	-3.0%
Oct-17	9	80%	9	200%	1.00	28	155%	3.11	54	96.1%	220,000	-20.6%	246,611	-6.9%
Nov-17	4	100%	4	0%	1.00	24	85%	6.00	71	95.5%	262,500	-19.2%	262,250	-19.2%
Dec-17	-	-100%	5	-17%	-	21	50%	-	-	-	-	-	-	-
2017	56	19%	103	30%	0.54	25	46%	6.17	66	96.6%	253,250	3.4%	264,124	3.8%
Jan-18	5	150%	14	100%	0.36	24	26%	4.80	46	96.8%	260,000	14.7%	267,100	17.8%
Feb-18	3	-25%	10	-17%	0.30	27	13%	9.00	83	95.1%	270,000	-8.7%	267,667	-15.8%
Mar-18	5	25%	12	50%	0.42	31	24%	6.20	64	96.0%	192,500	-34.2%	246,300	-9.4%
Apr-18	4	-56%	9	13%	0.44	32	68%	8.00	52	94.8%	242,750	-1.7%	230,375	-16.4%
May-18	8	300%	13	117%	0.62	30	36%	3.75	92	97.5%	260,000	7.2%	262,719	8.3%
Jun-18	9	0%	17	6%	0.53	30	20%	3.33	64	96.6%	312,000	14.3%	294,278	11.6%
Jul-18	5	0%	11	-8%	0.45	35	9%	7.00	81	98.7%	260,750	0.7%	289,750	19.4%
Aug-18	7	75%	6	50%	1.17	29	4%	4.14	49	95.8%	240,000	-22.5%	233,607	-26.2%
Sep-18	2	-50%	11	-8%	0.18	31	0%	15.50	109	98.1%	223,500	8.5%	223,500	0.2%
Oct-18	6	-33%	9	0%	0.67	30	7%	5.00	75	96.1%	283,000	28.6%	283,000	14.8%
Nov-18	4	0%	2	-50%	2.00	24	0%	6.00	93	96.2%	335,500	27.8%	346,000	31.9%
Dec-18	2	-	3	-40%	0.67	21	0%	10.50	133	96.2%	282,500	-	282,500	-
2018	60	7%	117	14%	0.51	29	17%	6.94	73	96.5%	260,875	3.0%	270,329	2.3%

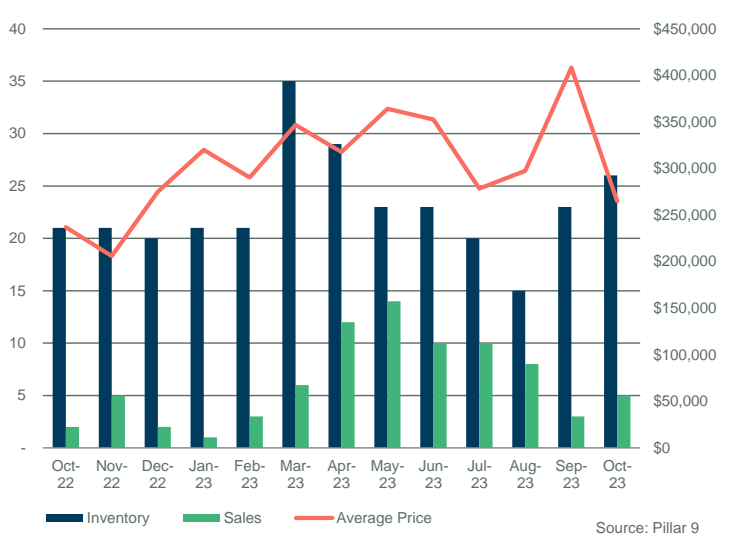
CENSUS DIVISION 1														
	Sales	Y/Y%	New Listings	Y/Y%	S/NL Ratio	Inventory	Y/Y%	Months of Supply	DOM	SP/LP	Median Price	Y/Y%	Average Price	Y/Y%
Jan-19	1	-80%	9	-36%	0.11	23	-4%	23.00	199	95.7%	225,000	-13.5%	225,000	-15.8%
Feb-19	3	0%	7	-30%	0.43	24	-11%	8.00	39	96.1%	260,000	-3.7%	282,167	5.4%
Mar-19	2	-60%	7	-42%	0.29	25	-19%	12.50	65	96.5%	181,000	-6.0%	181,000	-26.5%
Apr-19	8	100%	8	-11%	1.00	23	-28%	2.88	67	94.8%	212,750	-12.4%	222,438	-3.4%
May-19	5	-38%	7	-46%	0.71	22	-27%	4.40	132	94.3%	240,000	-7.7%	239,300	-8.9%
Jun-19	6	-33%	17	0%	0.35	31	3%	5.17	78	99.6%	275,000	-11.9%	273,650	-7.0%
Jul-19	8	60%	11	0%	0.73	30	-14%	3.75	41	96.3%	239,500	-8.1%	243,669	-15.9%
Aug-19	3	-57%	5	-17%	0.60	29	0%	9.67	40	97.2%	196,000	-18.3%	216,167	-7.5%
Sep-19	7	250%	7	-36%	1.00	25	-19%	3.57	58	96.2%	273,000	22.1%	269,571	20.0%
Oct-19	3	-50%	11	22%	0.27	30	0%	10.00	48	94.9%	268,000	-5.3%	247,667	-12.5%
Nov-19	5	25%	9	350%	0.56	30	25%	6.00	99	95.6%	235,000	-30.0%	279,000	-19.4%
Dec-19	2	0%	5	67%	0.40	29	38%	14.50	72	96.7%	169,000	-40.2%	169,000	-40.2%
2019	53	-12%	103	-12%	0.51	27	-5%	8.62	71	96.1%	240,000	-8.0%	245,514	-9.2%
Jan-20	2	100%	10	11%	0.20	35	52%	17.50	79	95.2%	185,250	-17.7%	185,250	-17.7%
Feb-20	2	-33%	7	0%	0.29	37	54%	18.50	140	96.6%	239,000	-8.1%	239,000	-15.3%
Mar-20	7	250%	3	-57%	2.33	29	16%	4.14	37	98.0%	283,000	56.4%	269,643	49.0%
Apr-20	3	-63%	7	-13%	0.43	25	9%	8.33	176	95.7%	290,000	36.3%	325,000	46.1%
May-20	4	-20%	14	100%	0.29	31	41%	7.75	201	95.9%	283,450	18.1%	277,225	15.8%
Jun-20	6	0%	12	-29%	0.50	35	13%	5.83	98	97.1%	284,450	3.4%	277,650	1.5%
Jul-20	5	-38%	11	0%	0.45	37	23%	7.40	187	97.0%	275,000	14.8%	272,300	11.8%
Aug-20	11	267%	4	-20%	2.75	30	3%	2.73	92	96.1%	284,000	44.9%	316,909	46.6%
Sep-20	6	-14%	14	100%	0.43	34	36%	5.67	81	96.8%	258,225	-5.4%	266,783	-1.0%
Oct-20	6	100%	6	-45%	1.00	31	3%	5.17	64	96.8%	268,500	0.2%	303,500	22.5%
Nov-20	3	-40%	5	-44%	0.60	27	-10%	9.00	94	96.5%	230,000	-2.1%	228,000	-18.3%
Dec-20	7	250%	4	-20%	1.75	20	-31%	2.86	119	91.9%	225,000	33.1%	253,143	49.8%
2020	62	17%	97	-6%	0.64	31	17%	7.91	106	96.1%	272,750	13.6%	277,597	13.1%
Jan-21	7	250%	10	0%	0.70	23	-34%	3.29	171	96.0%	267,500	44.4%	267,000	44.1%
Feb-21	5	150%	7	0%	0.71	22	-41%	4.40	65	97.4%	284,000	18.8%	303,050	26.8%
Mar-21	8	14%	4	33%	2.00	17	-41%	2.13	91	95.2%	265,000	-6.4%	305,488	13.3%
Apr-21	10	233%	12	71%	0.83	17	-32%	1.70	51	97.2%	287,250	-0.9%	310,130	-4.6%
May-21	4	0%	11	-21%	0.36	21	-32%	5.25	30	97.6%	307,500	8.5%	301,250	8.7%
Jun-21	10	67%	18	50%	0.56	24	-31%	2.40	62	96.5%	259,500	-8.8%	265,550	-4.4%
Jul-21	9	80%	9	-18%	1.00	21	-43%	2.33	29	97.7%	287,500	4.5%	280,156	2.9%
Aug-21	8	-27%	17	325%	0.47	29	-3%	3.63	23	96.5%	257,000	-9.5%	266,813	-15.8%
Sep-21	11	83%	9	-36%	1.22	26	-24%	2.36	62	95.5%	236,500	-8.4%	266,145	-0.2%
Oct-21	7	17%	11	83%	0.64	29	-6%	4.14	55	95.8%	285,000	6.1%	281,857	-7.1%
Nov-21	6	100%	8	60%	0.75	27	0%	4.50	73	95.3%	263,000	14.3%	279,750	22.7%
Dec-21	6	-14%	-	-100%	-	17	-15%	2.83	56	95.9%	256,250	13.9%	248,708	-1.8%
2021	91	47%	116	20%	0.78	23	-25%	3.25	64	96.4%	269,000	-1.4%	280,409	1.0%
Jan-22	6	-14%	4	-60%	1.50	12	-48%	2.00	100	97.0%	256,014	-4.3%	316,427	18.5%
Feb-22	7	40%	4	-43%	1.75	8	-64%	1.14	60	97.4%	365,000	28.5%	334,171	10.3%
Mar-22	3	-63%	7	75%	0.43	11	-35%	3.67	18	99.5%	270,000	1.9%	286,333	-6.3%
Apr-22	4	-60%	4	-67%	1.00	11	-35%	2.75	24	96.9%	234,375	-18.4%	248,063	-20.0%
May-22	3	-25%	4	-64%	0.75	11	-48%	3.67	99	99.1%	368,125	19.7%	362,708	20.4%
Jun-22	5	-50%	6	-67%	0.83	11	-54%	2.20	42	97.4%	275,000	6.0%	301,200	13.4%
Jul-22	2	-78%	4	-56%	0.50	12	-43%	6.00	11	98.8%	382,500	33.0%	382,500	36.5%
Aug-22	1	-88%	7	-59%	0.14	18	-38%	18.00	15	103.0%	175,000	-31.9%	175,000	-34.4%
Sep-22	4	-64%	8	-11%	0.50	17	-35%	4.25	33	96.8%	237,950	0.6%	274,975	3.3%
Oct-22	2	-71%	9	-18%	0.22	21	-28%	10.50	28	96.1%	237,000	-16.8%	237,000	-15.9%
Nov-22	5	-17%	8	0%	0.63	21	-22%	4.20	25	97.8%	220,000	-16.3%	206,000	-26.4%
Dec-22	2	-67%	4	-	0.50	20	18%	10.00	156	94.9%	275,000	7.3%	275,000	10.6%
2022	44	-52%	69	-41%	0.64	14	-36%	5.70	53	97.6%	250,000	-7.1%	290,387	3.6%
Jan-23	1	-83%	5	25%	0.20	21	75%	21.00	25	98.9%	320,000	25.0%	320,000	1.1%
Feb-23	3	-57%	8	100%	0.38	21	163%	7.00	19	98.8%	290,000	-20.5%	290,333	-13.1%
Mar-23	6	100%	22	214%	0.27	35	218%	5.83	37	97.7%	369,000	36.7%	346,750	21.1%
Apr-23	12	200%	7	75%	1.71	29	164%	2.42	61	97.5%	300,500	28.2%	317,792	28.1%
May-23	14	367%	13	225%	1.08	23	109%	1.64	75	97.0%	367,500	-0.2%	364,143	0.4%
Jun-23	10	100%	14	133%	0.71	23	109%	2.30	52	97.8%	365,000	32.7%	352,525	17.0%
Jul-23	10	400%	8	100%	1.25	20	67%	2.00	42	96.0%	256,250	-33.0%	278,450	-27.2%
Aug-23	8	700%	8	14%	1.00	15	-17%	1.88	30	97.4%	282,500	61.4%	297,500	70.0%
Sep-23	3	-25%	13	63%	0.23	23	35%	7.67	44	98.4%	440,000	84.9%	408,333	48.5%
Oct-23	5	150%	15	67%	0.33	26	24%	5.20	111	98.2%	232,000	-2.1%	264,900	11.8%
Nov-23														
Dec-23														
2023	72	95%	113	98%	0.64	24	95%	5.69	54	97.4%	320,000	16.6%	324,264	7.5%

CENSUS DIVISION 1

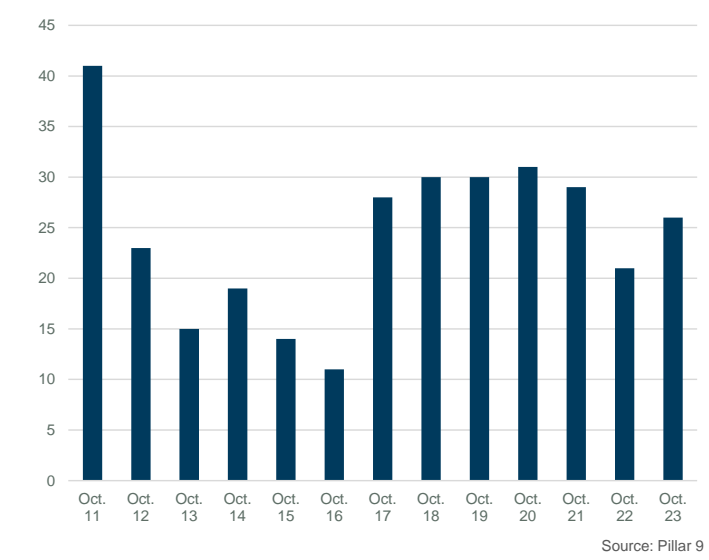
MONTHS OF SUPPLY AND PRICE CHANGE



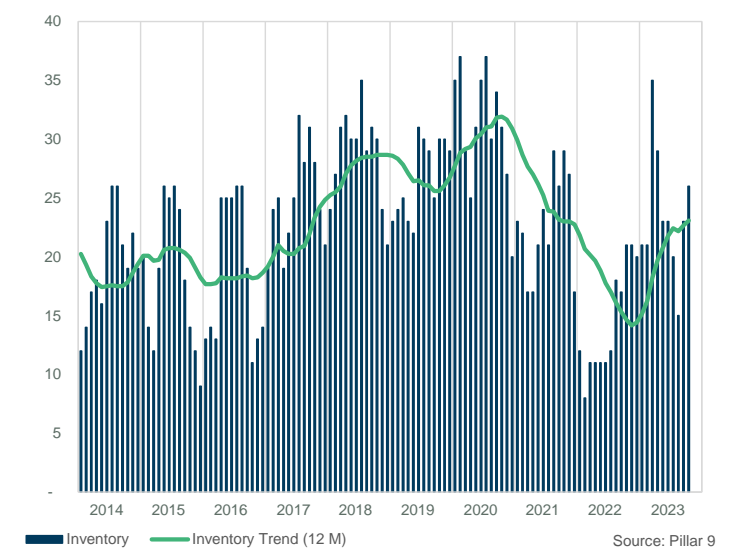
INVENTORY, SALES, AND PRICE



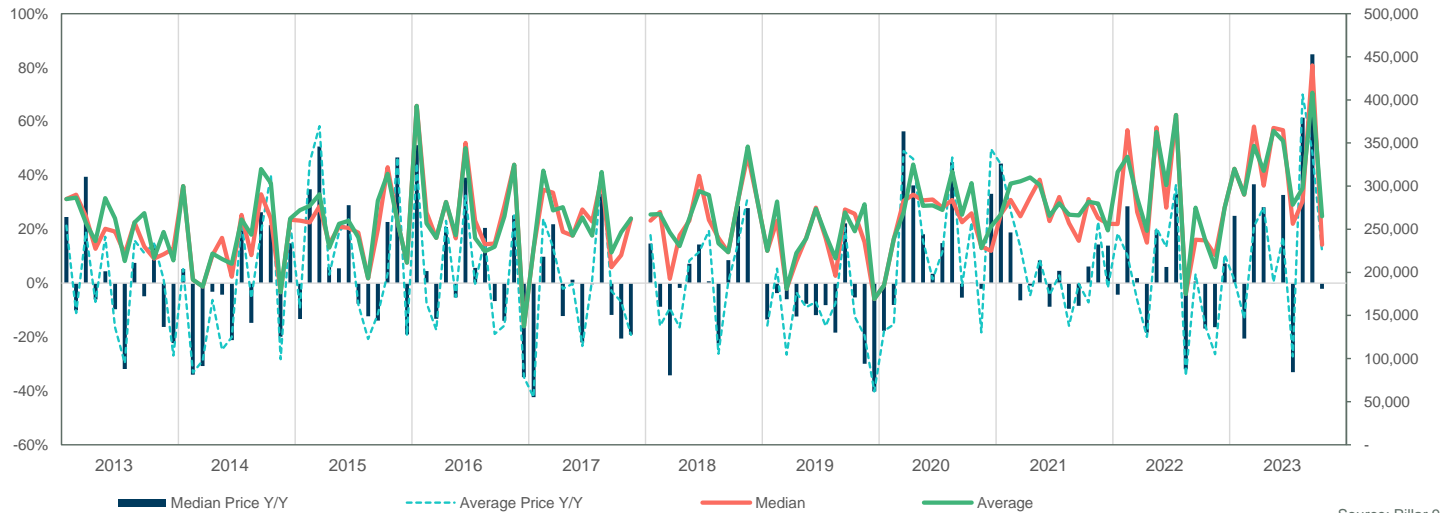
INVENTORY



INVENTORY



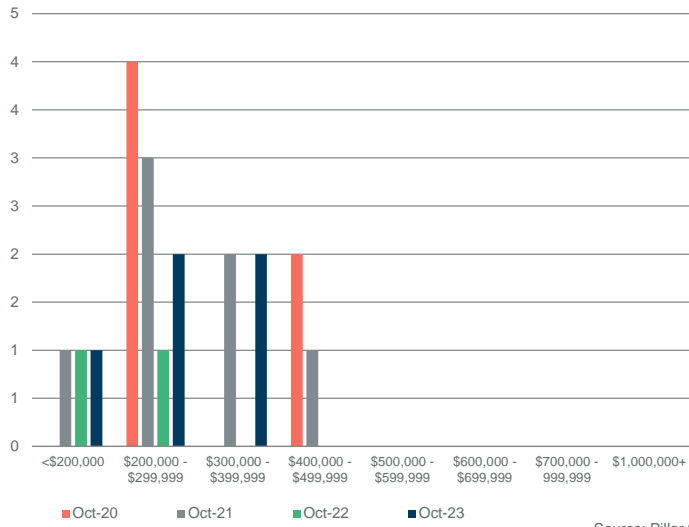
PRICE COMPARISON



CENSUS DIVISION 1

SALES BY PRICE RANGE

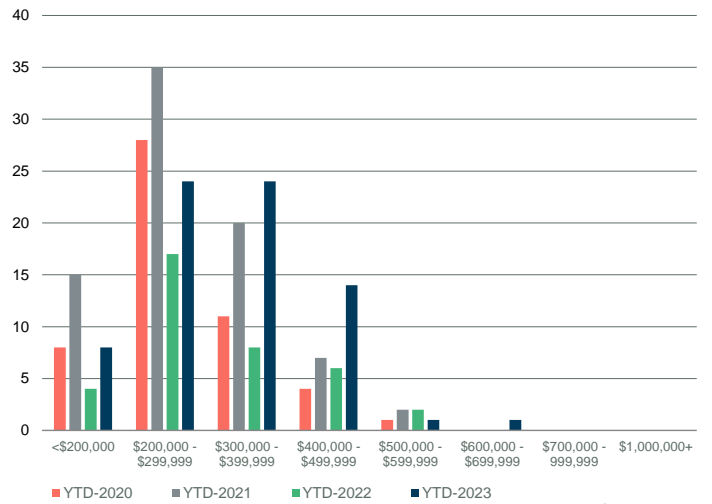
October



Source: Pillar 9

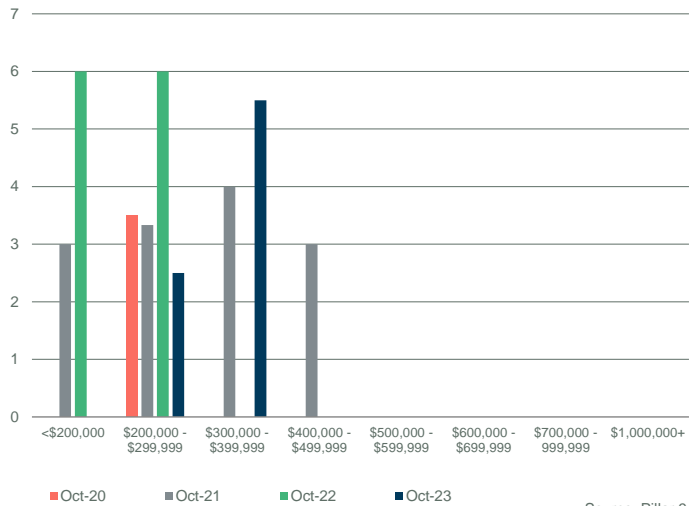
YTD SALES BY PRICE RANGE

YTD-OCT



Source: Pillar 9

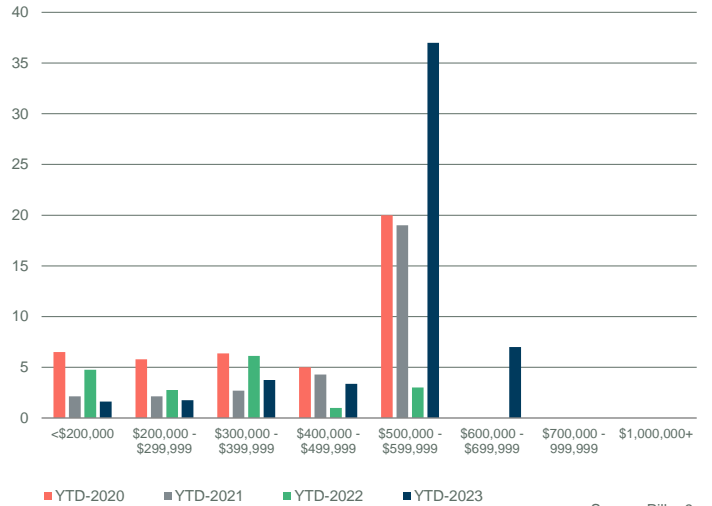
MONTHS OF SUPPLY BY PRICE RANGE



Source: Pillar 9

YTD MONTHS OF SUPPLY BY PRICE RANGE

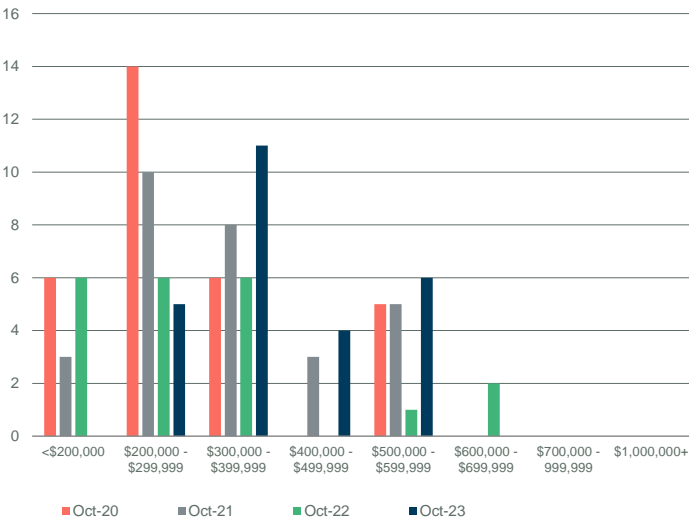
YTD-OCT



Source: Pillar 9

INVENTORY BY PRICE RANGE

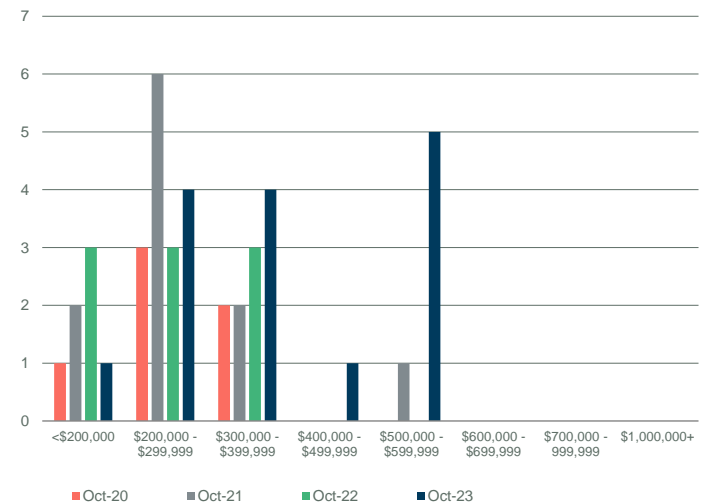
October



Source: Pillar 9

NEW LISTINGS BY PRICE RANGE

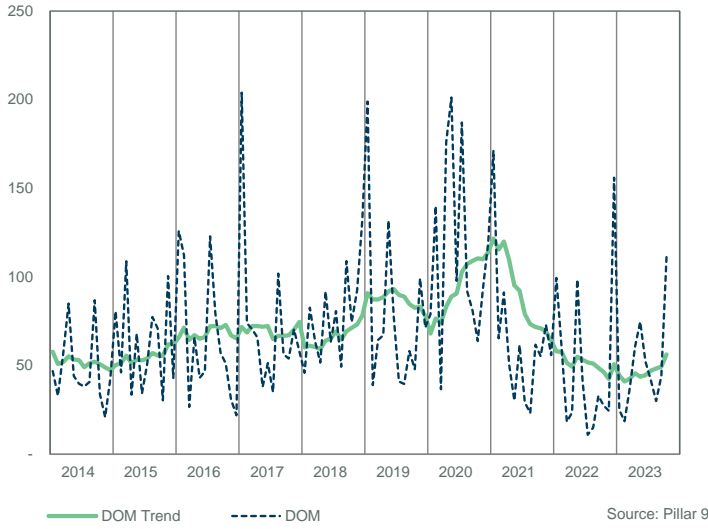
October



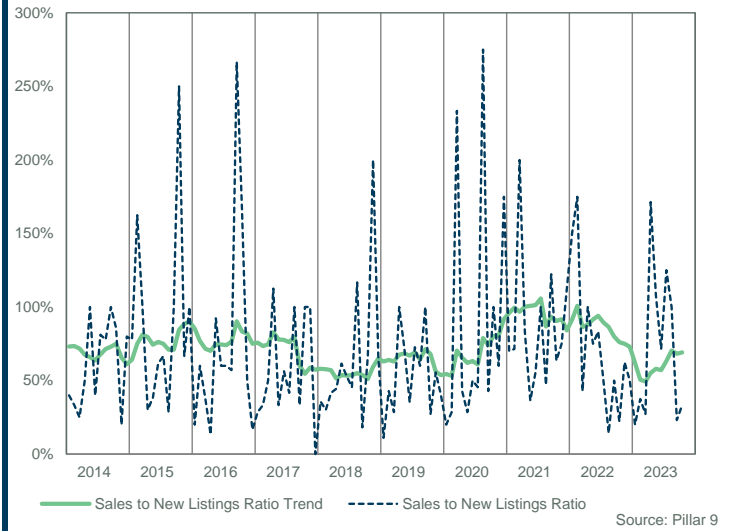
Source: Pillar 9

CENSUS DIVISION 1

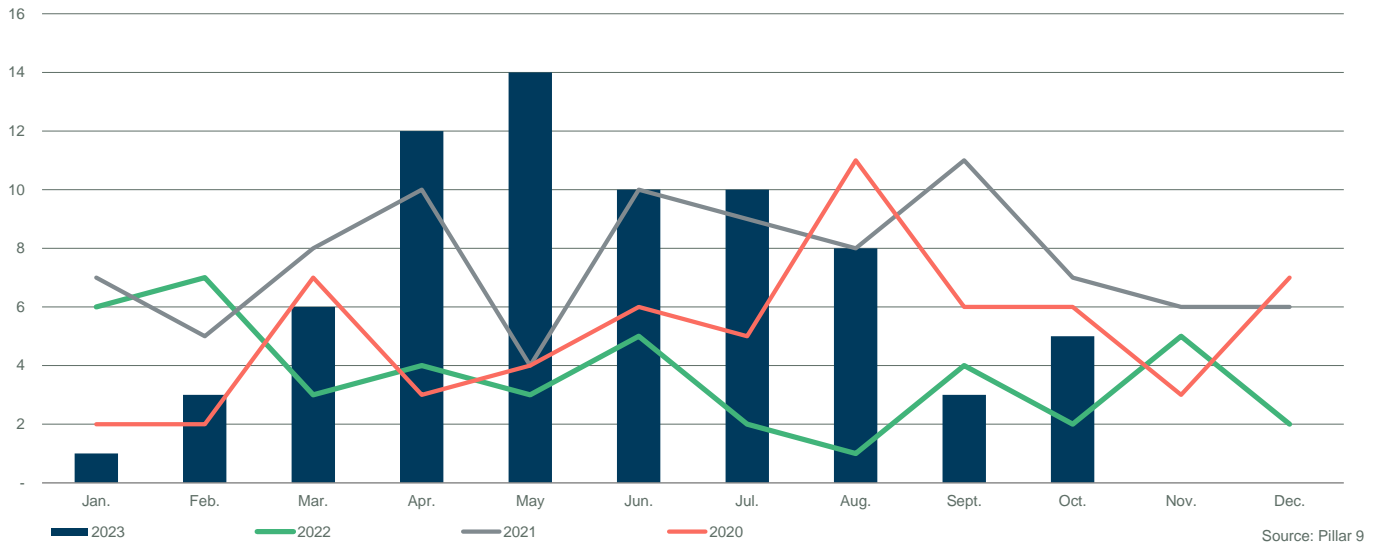
DAYS ON MARKET



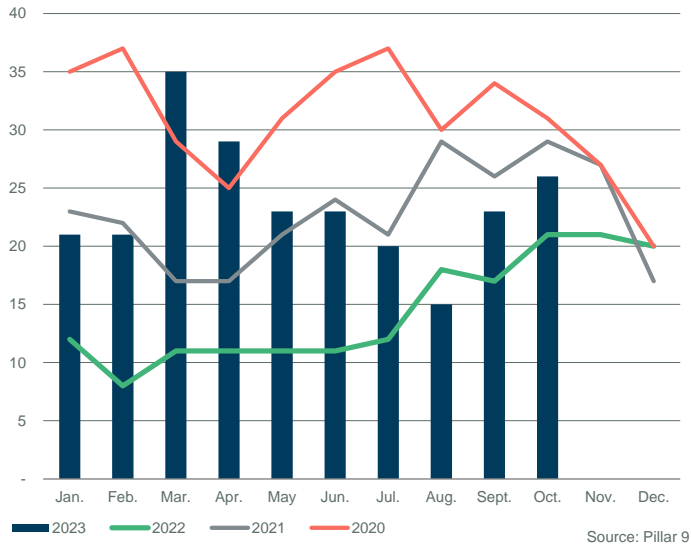
SALES TO NEW LISTINGS RATIO



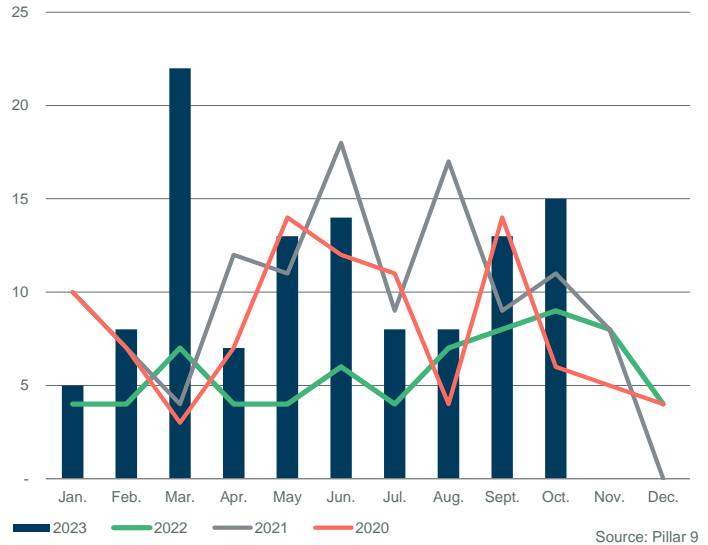
SALES COMPARISON



INVENTORY COMPARISON



NEW LISTINGS COMPARISON



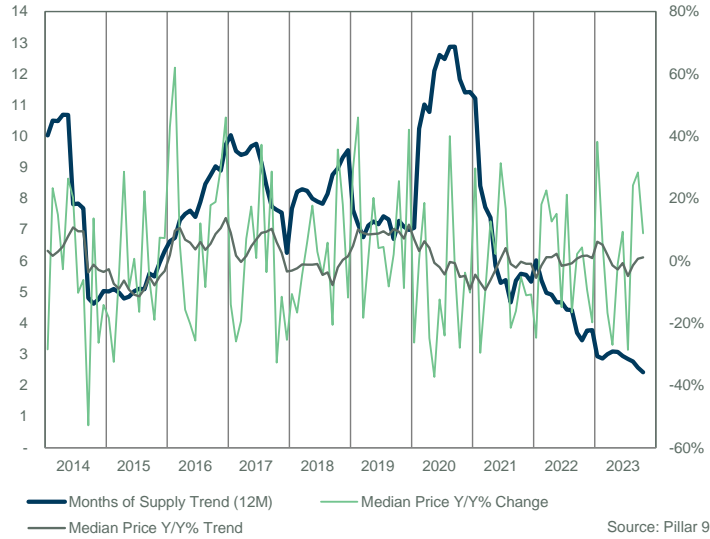
CENSUS DIVISION 1

	Sales	Y/Y%	New Listings	Y/Y%	S/NL Ratio	Inventory	Y/Y%	Months of Supply	DOM	SP/LP	Median Price	Y/Y%	Average Price	Y/Y%
Jan-14	4	100%	11	10%	0.36	23	-41%	5.75	91	100.5%	186,750	-28.4%	176,500	-32.4%
Feb-14	3	-67%	9	80%	0.33	26	-4%	8.67	47	97.5%	222,000	23.3%	239,667	26.0%
Mar-14	7	17%	19	46%	0.37	36	13%	5.14	113	97.0%	229,000	14.8%	216,214	18.3%
Apr-14	8	-27%	17	70%	0.47	41	41%	5.13	91	96.4%	180,000	-2.7%	198,000	13.1%
May-14	12	50%	20	25%	0.60	46	48%	3.83	75	97.2%	213,000	26.4%	209,167	27.0%
Jun-14	9	800%	9	-36%	1.00	41	5%	4.56	39	97.7%	227,000	20.2%	215,722	14.2%
Jul-14	10	0%	12	-8%	0.83	40	8%	4.00	51	97.9%	183,000	-10.3%	186,400	-10.8%
Aug-14	8	60%	17	89%	0.47	41	17%	5.13	27	98.9%	171,750	-6.1%	184,563	4.3%
Sep-14	13	1200%	9	-36%	1.44	32	-14%	2.46	39	97.9%	167,500	-52.8%	197,069	-44.5%
Oct-14	6	20%	10	25%	0.60	30	-17%	5.00	73	97.5%	215,950	13.7%	236,900	20.2%
Nov-14	6	-40%	6	50%	1.00	25	4%	4.17	33	98.3%	162,000	-26.4%	178,584	-26.5%
Dec-14	4	-20%	8	700%	0.50	26	53%	6.50	32	96.8%	140,750	-14.2%	163,750	-10.6%
2014	90	23%	147	26%	0.61	34	10%	5.03	58	97.7%	188,500	-0.2%	200,270	1.4%
Jan-15	5	25%	11	0%	0.45	28	22%	5.60	55	96.5%	152,500	-18.3%	196,400	11.3%
Feb-15	3	0%	6	-33%	0.50	29	12%	9.67	35	99.0%	150,000	-32.4%	173,000	-27.8%
Mar-15	9	29%	23	21%	0.39	33	-8%	3.67	56	96.8%	219,000	-4.4%	205,778	-4.8%
Apr-15	11	38%	12	-29%	0.92	32	-22%	2.91	35	97.6%	231,500	28.6%	218,909	10.6%
May-15	8	-33%	15	-25%	0.53	36	-22%	4.50	54	95.9%	194,250	-8.8%	198,625	-5.0%
Jun-15	6	-33%	15	67%	0.40	40	-2%	6.67	29	97.8%	228,500	0.7%	212,167	-1.6%
Jul-15	7	-30%	9	-25%	0.78	35	-13%	5.00	80	96.3%	152,900	-16.4%	194,771	4.5%
Aug-15	8	0%	14	-18%	0.57	39	-5%	4.88	86	97.0%	210,250	22.4%	203,250	10.1%
Sep-15	4	-69%	9	0%	0.44	34	6%	8.50	61	96.4%	157,000	-6.3%	147,875	-25.0%
Oct-15	9	50%	16	60%	0.56	35	17%	3.89	54	96.2%	175,000	-19.0%	185,667	-21.6%
Nov-15	4	-33%	10	67%	0.40	38	52%	9.50	30	95.4%	174,000	7.4%	191,000	7.0%
Dec-15	3	-25%	5	-38%	0.60	33	27%	11.00	32	94.4%	151,000	7.3%	226,167	38.1%
2015	77	-14%	145	-1%	0.53	34	5%	6.31	53	96.7%	176,000	-6.6%	198,927	-0.7%
Jan-16	3	-40%	5	-55%	0.60	28	0%	9.33	120	92.9%	218,000	43.0%	205,067	4.4%
Feb-16	3	0%	8	33%	0.38	33	14%	11.00	107	95.5%	243,000	62.0%	295,667	70.9%
Mar-16	4	-56%	14	-39%	0.29	42	27%	10.50	150	97.6%	230,000	5.0%	261,250	27.0%
Apr-16	8	-27%	13	8%	0.62	42	31%	5.25	73	96.2%	195,250	-15.7%	227,175	3.8%
May-16	7	-13%	12	-20%	0.58	41	14%	5.86	70	96.7%	155,000	-20.2%	166,129	-16.4%
Jun-16	10	67%	19	27%	0.53	42	5%	4.20	63	96.0%	170,000	-25.6%	183,050	-13.7%
Jul-16	4	-43%	7	-22%	0.57	43	23%	10.75	81	94.1%	171,250	12.0%	179,500	-7.8%
Aug-16	4	-50%	14	0%	0.29	47	21%	11.75	40	97.4%	192,500	-8.4%	194,125	-4.5%
Sep-16	4	0%	12	33%	0.33	48	41%	12.00	35	97.0%	185,000	17.8%	185,750	25.6%
Oct-16	7	-22%	21	31%	0.33	51	46%	7.29	55	95.8%	208,000	18.9%	201,571	8.6%
Nov-16	6	50%	17	70%	0.35	47	24%	7.83	70	94.8%	226,000	29.9%	232,833	21.9%
Dec-16	2	-33%	4	-20%	0.50	42	27%	21.00	78	90.9%	220,500	46.0%	220,500	-2.5%
2016	62	-19%	146	1%	0.42	42	23%	9.73	74	95.8%	205,000	16.5%	207,169	4.1%
Jan-17	3	0%	10	100%	0.30	39	39%	13.00	96	96.4%	187,500	-14.0%	178,833	-12.8%
Feb-17	7	133%	4	-50%	1.75	34	3%	4.86	159	96.0%	180,000	-25.9%	186,714	-36.8%
Mar-17	4	0%	11	-21%	0.36	36	-14%	9.00	64	94.7%	185,750	-19.2%	210,750	-19.3%
Apr-17	6	-25%	8	-38%	0.75	35	-17%	5.83	84	96.6%	209,000	7.0%	224,750	-1.1%
May-17	5	-29%	16	33%	0.31	43	5%	8.60	81	96.7%	182,000	17.4%	194,200	16.9%
Jun-17	8	-20%	10	-47%	0.80	41	-2%	5.13	62	95.5%	171,500	0.9%	187,625	2.5%
Jul-17	11	175%	12	71%	0.92	38	-12%	3.45	71	96.3%	235,000	37.2%	239,545	33.5%
Aug-17	12	200%	14	0%	0.86	35	-26%	2.92	74	95.7%	185,500	-3.6%	211,996	9.2%
Sep-17	8	100%	9	-25%	0.89	32	-33%	4.00	95	96.4%	238,000	28.6%	222,563	19.8%
Oct-17	6	-14%	13	-38%	0.46	36	-29%	6.00	194	97.1%	140,000	-32.7%	225,317	11.8%
Nov-17	5	-17%	5	-71%	1.00	34	-28%	6.80	87	93.4%	200,000	-11.5%	208,200	-10.6%
Dec-17	4	100%	2	-50%	2.00	22	-48%	5.50	85	94.2%	164,500	-25.4%	165,125	-25.1%
2017	79	27%	114	-22%	0.69	35	-13%	6.26	94	95.9%	190,000	-7.3%	209,112	0.9%
Jan-18	1	-67%	13	30%	0.08	30	-23%	30.00	44	95.8%	167,500	-10.7%	167,500	-6.3%
Feb-18	3	-57%	10	150%	0.30	34	0%	11.33	58	96.4%	150,000	-16.7%	169,000	-9.5%
Mar-18	4	0%	14	27%	0.29	40	11%	10.00	66	95.9%	177,500	-4.4%	178,250	-15.4%
Apr-18	8	33%	14	75%	0.57	42	20%	5.25	54	95.7%	221,400	5.9%	201,975	-10.1%
May-18	9	80%	20	25%	0.45	50	16%	5.56	59	96.6%	214,250	17.7%	205,314	5.7%
Jun-18	12	50%	15	50%	0.80	48	17%	4.00	71	96.8%	176,500	2.9%	186,492	-0.6%
Jul-18	14	27%	10	-17%	1.40	36	-5%	2.57	82	97.2%	224,500	-4.5%	229,643	-4.1%
Aug-18	5	-58%	10	-29%	0.50	34	-3%	6.80	45	95.9%	196,250	5.8%	176,050	-17.0%
Sep-18	3	-63%	9	0%	0.33	34	6%	11.33	35	97.0%	189,000	-20.6%	181,667	-18.4%
Oct-18	4	-33%	9	-31%	0.44	34	-6%	8.50	69	95.4%	190,000	35.7%	183,750	-18.4%
Nov-18	3	-40%	10	100%	0.30	33	-3%	11.00	26	97.2%	236,000	18.0%	243,000	16.7%
Dec-18	4	0%	9	350%	0.44	33	50%	8.25	57	95.4%	145,000	-11.9%	183,250	11.0%
2018	70	-11%	143	25%	0.49	37	7%	9.55	62	96.5%	190,000	0.0%	198,947	-4.9%

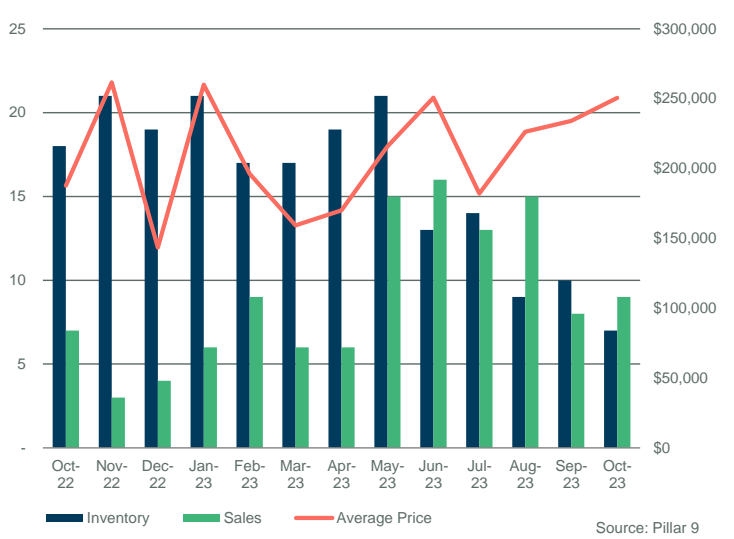
CENSUS DIVISION 1														
	Sales	Y/Y%	New Listings	Y/Y%	S/NL Ratio	Inventory	Y/Y%	Months of Supply	DOM	SP/LP	Median Price	Y/Y%	Average Price	Y/Y%
Jan-19	5	400%	11	-15%	0.45	35	17%	7.00	88	95.0%	217,000	29.6%	197,100	17.7%
Feb-19	5	67%	5	-50%	1.00	29	-15%	5.80	33	95.3%	219,000	46.0%	188,300	11.4%
Mar-19	7	75%	15	7%	0.47	35	-13%	5.00	83	95.0%	145,000	-18.3%	165,714	-7.0%
Apr-19	4	-50%	14	0%	0.29	39	-7%	9.75	77	96.8%	222,750	0.6%	235,125	16.4%
May-19	6	-33%	11	-45%	0.55	43	-14%	7.17	54	98.5%	257,500	20.2%	239,000	16.4%
Jun-19	12	0%	8	-47%	1.50	35	-27%	2.92	106	96.6%	183,750	4.1%	224,467	20.4%
Jul-19	6	-57%	9	-10%	0.67	34	-6%	5.67	81	94.7%	234,500	4.5%	271,833	18.4%
Aug-19	6	20%	7	-30%	0.86	33	-3%	5.50	140	96.3%	180,000	-8.3%	194,983	10.8%
Sep-19	7	133%	8	-11%	0.88	27	-21%	3.86	77	96.7%	193,000	2.1%	206,000	13.4%
Oct-19	2	-50%	10	11%	0.20	31	-9%	15.50	40	94.5%	238,600	25.6%	238,600	29.9%
Nov-19	4	33%	9	-10%	0.44	35	6%	8.75	45	95.0%	215,250	-8.8%	273,625	12.6%
Dec-19	5	25%	7	-22%	0.71	35	6%	7.00	72	96.1%	206,000	42.1%	216,800	18.3%
2019	69	-1%	114	-20%	0.61	34	-7%	6.99	81	96.0%	210,000	10.5%	218,170	9.7%
Jan-20	5	0%	12	9%	0.42	39	11%	7.80	131	95.3%	160,000	-26.3%	170,800	-13.3%
Feb-20	1	-80%	9	80%	0.11	44	52%	44.00	29	94.6%	220,000	0.5%	220,000	16.8%
Mar-20	3	-57%	11	-27%	0.27	43	23%	14.33	60	95.8%	172,000	18.6%	173,000	4.4%
Apr-20	6	50%	13	-7%	0.46	41	5%	6.83	128	93.8%	167,500	-24.8%	183,917	-21.8%
May-20	2	-67%	10	-9%	0.20	46	7%	23.00	69	93.7%	161,500	-37.3%	161,500	-32.4%
Jun-20	5	-58%	12	50%	0.42	45	29%	9.00	75	95.1%	161,000	-12.4%	180,000	-19.8%
Jul-20	10	67%	14	56%	0.71	41	21%	4.10	63	96.1%	178,250	-24.0%	218,515	-19.6%
Aug-20	4	-33%	9	29%	0.44	41	24%	10.25	67	96.6%	252,000	40.0%	255,250	30.9%
Sep-20	11	57%	16	100%	0.69	43	59%	3.91	49	95.9%	189,000	-2.1%	213,509	3.6%
Oct-20	12	500%	8	-20%	1.50	35	13%	2.92	106	95.6%	171,925	-27.9%	185,088	-22.4%
Nov-20	9	125%	9	0%	1.00	33	-6%	3.67	117	96.4%	207,000	-3.8%	221,103	-19.2%
Dec-20	5	0%	11	57%	0.45	36	3%	7.20	95	94.3%	185,000	-10.2%	196,100	-9.5%
2020	73	6%	134	18%	0.54	41	20%	11.42	87	95.5%	180,000	-14.3%	200,900	-7.9%
Jan-21	6	20%	9	-25%	0.67	32	-18%	5.33	68	93.9%	207,500	29.7%	207,292	21.4%
Feb-21	3	200%	7	-22%	0.43	31	-30%	10.33	61	95.5%	155,000	-29.5%	156,000	-29.1%
Mar-21	7	133%	23	109%	0.30	43	0%	6.14	54	95.2%	155,000	-9.9%	181,486	4.9%
Apr-21	14	133%	13	0%	1.08	39	-5%	2.79	91	96.5%	188,750	12.7%	231,379	25.8%
May-21	9	350%	16	60%	0.56	41	-11%	4.56	50	96.4%	165,000	2.2%	201,656	24.9%
Jun-21	17	240%	19	58%	0.89	39	-13%	2.29	52	98.5%	211,500	31.4%	240,482	33.6%
Jul-21	8	-20%	15	7%	0.53	41	0%	5.13	49	96.1%	207,950	16.7%	221,144	1.2%
Aug-21	18	350%	14	56%	1.29	31	-24%	1.72	47	96.8%	197,750	-21.5%	190,511	-25.4%
Sep-21	3	-73%	15	-6%	0.20	37	-14%	12.33	46	96.6%	158,500	-16.1%	173,833	-18.6%
Oct-21	6	-50%	7	-13%	0.86	33	-6%	5.50	109	97.0%	163,000	-5.2%	173,167	-6.4%
Nov-21	8	-11%	6	-33%	1.33	26	-21%	3.25	110	96.3%	184,000	-11.1%	180,125	-18.5%
Dec-21	5	0%	7	-36%	0.71	23	-36%	4.60	20	96.9%	165,000	-10.8%	160,360	-18.2%
2021	104	42%	151	13%	0.69	35	-15%	5.33	63	96.6%	175,000	-2.8%	203,137	1.1%
Jan-22	2	-67%	14	56%	0.14	27	-16%	13.50	61	96.9%	156,250	-24.7%	156,250	-24.6%
Feb-22	9	200%	10	43%	0.90	25	-19%	2.78	52	97.1%	183,000	18.1%	258,322	65.6%
Mar-22	16	129%	12	-48%	1.33	19	-56%	1.19	68	97.1%	190,000	22.6%	220,613	21.6%
Apr-22	10	-29%	15	15%	0.67	21	-46%	2.10	23	101.2%	212,500	12.6%	216,160	-6.6%
May-22	13	44%	16	0%	0.81	21	-49%	1.62	23	98.5%	189,900	15.1%	223,669	10.9%
Jun-22	12	-29%	23	21%	0.52	28	-28%	2.33	31	98.3%	179,950	-14.9%	192,496	-20.0%
Jul-22	13	63%	15	0%	0.87	29	-29%	2.23	53	98.0%	252,000	21.2%	241,877	9.4%
Aug-22	15	-17%	12	-14%	1.25	23	-26%	1.53	33	97.6%	165,000	-16.6%	183,053	-3.9%
Sep-22	6	100%	11	-27%	0.55	22	-41%	3.67	57	98.2%	162,000	2.2%	206,650	18.9%
Oct-22	7	17%	5	-29%	1.40	18	-45%	2.57	40	97.1%	170,000	4.3%	187,714	8.4%
Nov-22	3	-63%	8	33%	0.38	21	-19%	7.00	153	96.2%	167,000	-9.2%	261,667	45.3%
Dec-22	4	-20%	5	-29%	0.80	19	-17%	4.75	81	94.5%	132,350	-19.8%	143,425	-10.6%
2022	110	6%	146	-3%	0.75	23	-33%	3.77	47	97.9%	175,450	0.3%	212,266	4.5%
Jan-23	6	200%	10	-29%	0.60	21	-22%	3.50	47	97.7%	216,000	38.2%	259,933	66.4%
Feb-23	9	0%	7	-30%	1.29	17	-32%	1.89	44	96.4%	194,000	6.0%	196,264	-24.0%
Mar-23	6	-63%	10	-17%	0.60	17	-11%	2.83	51	96.7%	158,250	-16.7%	159,233	-27.8%
Apr-23	6	-40%	11	-27%	0.55	19	-10%	3.17	70	97.7%	155,125	-27.0%	169,983	-21.4%
May-23	15	15%	18	13%	0.83	21	0%	1.40	38	97.2%	188,000	-1.0%	215,960	-3.4%
Jun-23	16	33%	10	-57%	1.60	13	-54%	0.81	40	97.7%	196,750	9.3%	250,688	30.2%
Jul-23	13	0%	17	13%	0.76	14	-52%	1.08	26	97.8%	180,000	-28.6%	182,077	-24.7%
Aug-23	15	0%	10	-17%	1.50	9	-61%	0.60	21	98.2%	205,000	24.2%	226,317	23.6%
Sep-23	8	33%	10	-9%	0.80	10	-55%	1.25	32	97.3%	208,000	28.4%	234,063	13.3%
Oct-23	9	29%	9	80%	1.00	7	-61%	0.78	42	96.6%	185,000	8.8%	250,618	33.5%
Nov-23														
Dec-23														
2023	103	0%	112	-16%	0.92	15	-36%	1.73	38	97.4%	195,000	10.8%	217,879	2.1%

CENSUS DIVISION 1

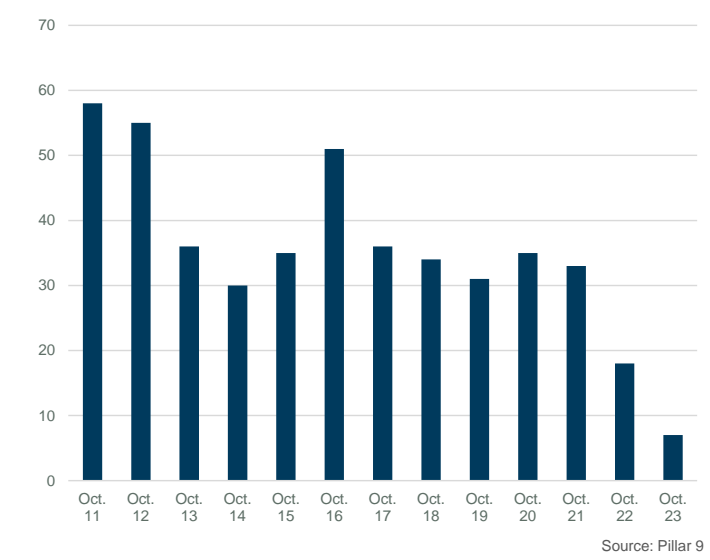
MONTHS OF SUPPLY AND PRICE CHANGE



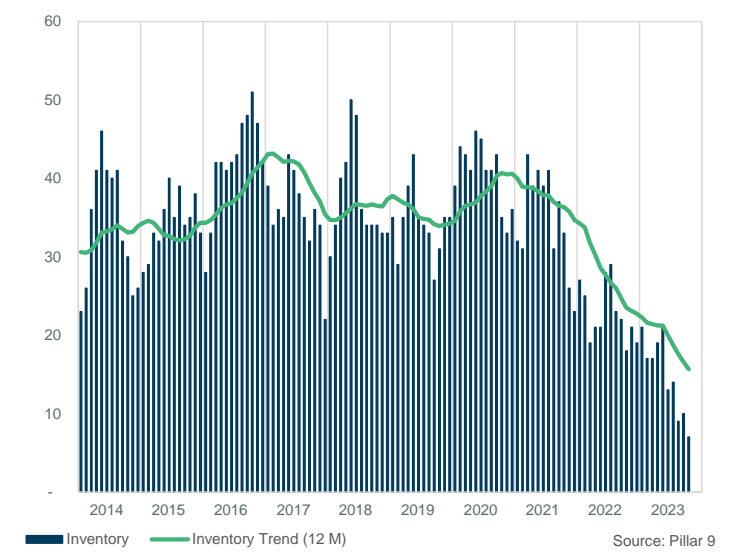
INVENTORY, SALES, AND PRICE



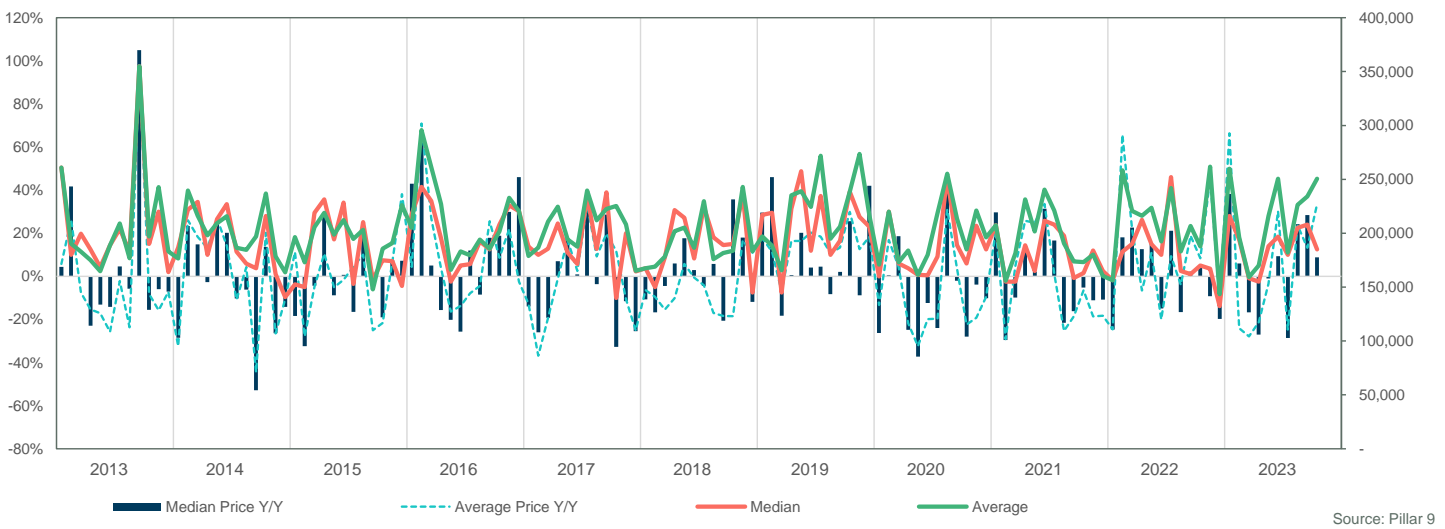
INVENTORY



INVENTORY



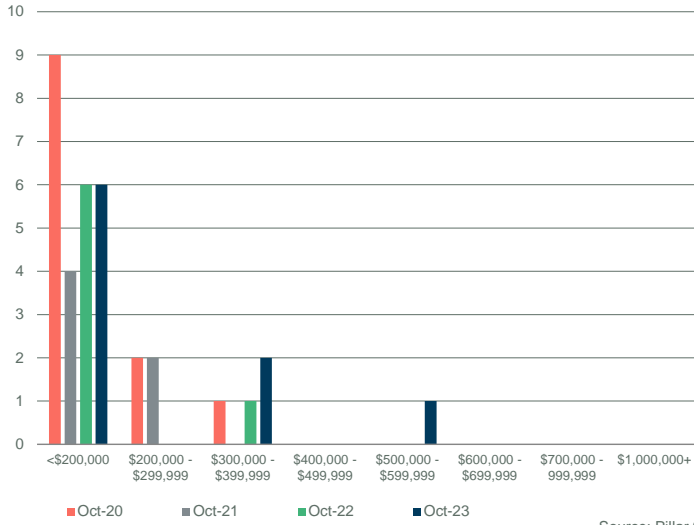
PRICE COMPARISON



CENSUS DIVISION 1

SALES BY PRICE RANGE

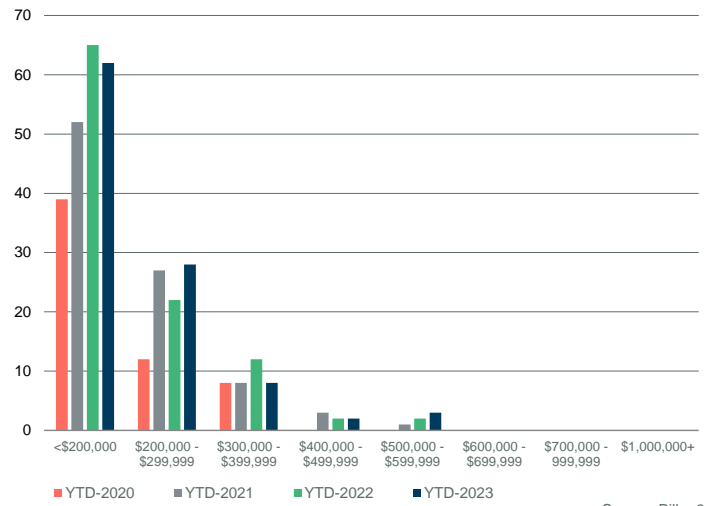
October



Source: Pillar 9

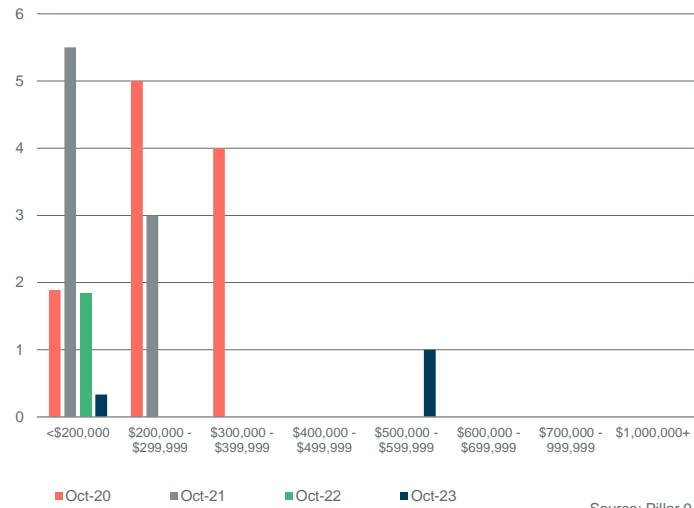
YTD SALES BY PRICE RANGE

YTD-OCT



Source: Pillar 9

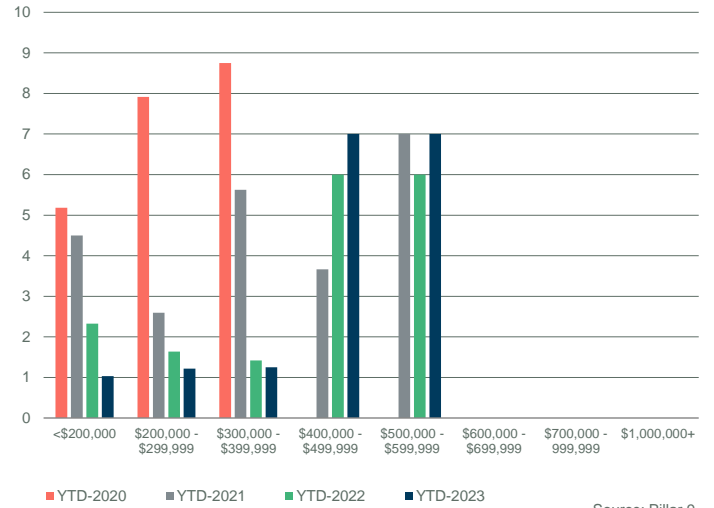
MONTHS OF SUPPLY BY PRICE RANGE



Source: Pillar 9

YTD MONTHS OF SUPPLY BY PRICE RANGE

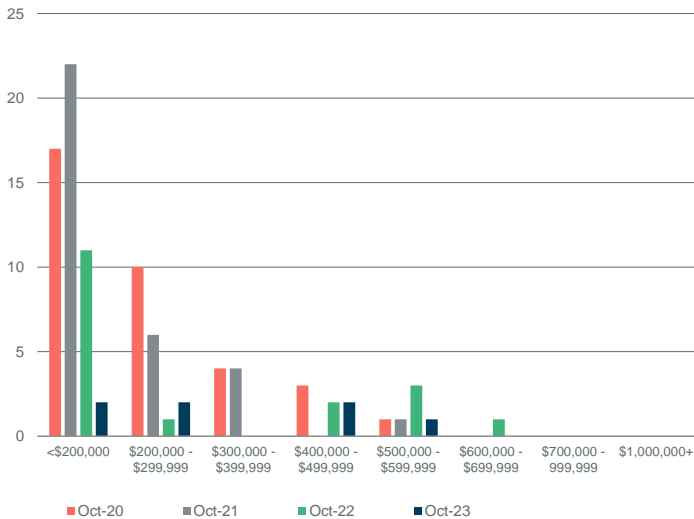
YTD-OCT



Source: Pillar 9

INVENTORY BY PRICE RANGE

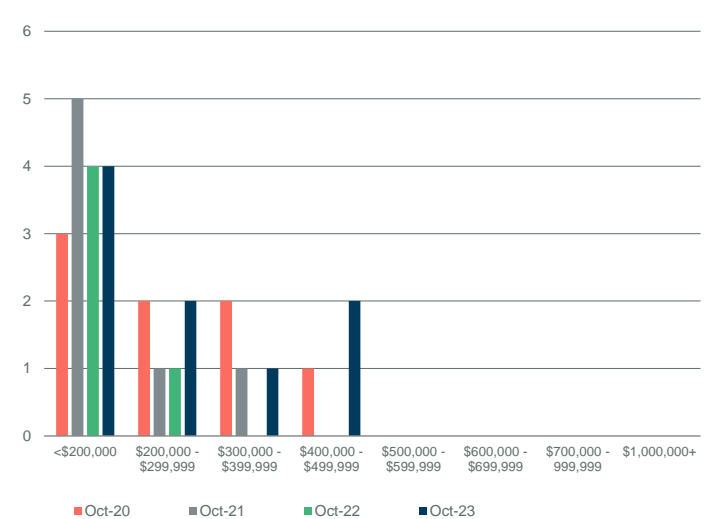
October



Source: Pillar 9

NEW LISTINGS BY PRICE RANGE

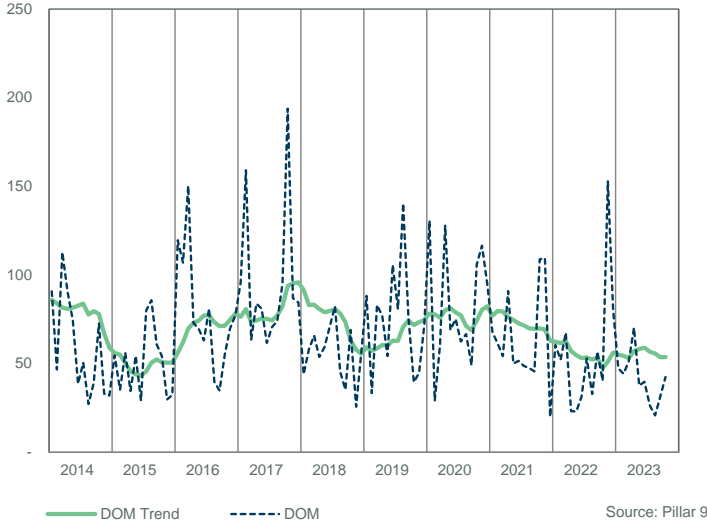
October



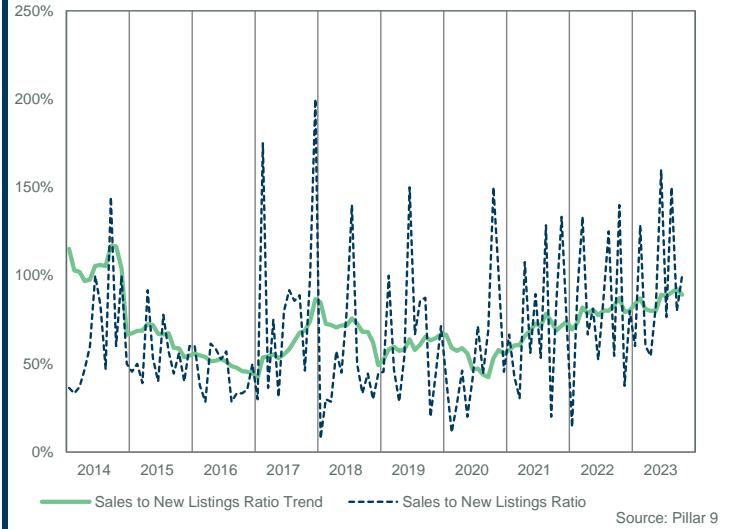
Source: Pillar 9

CENSUS DIVISION 1

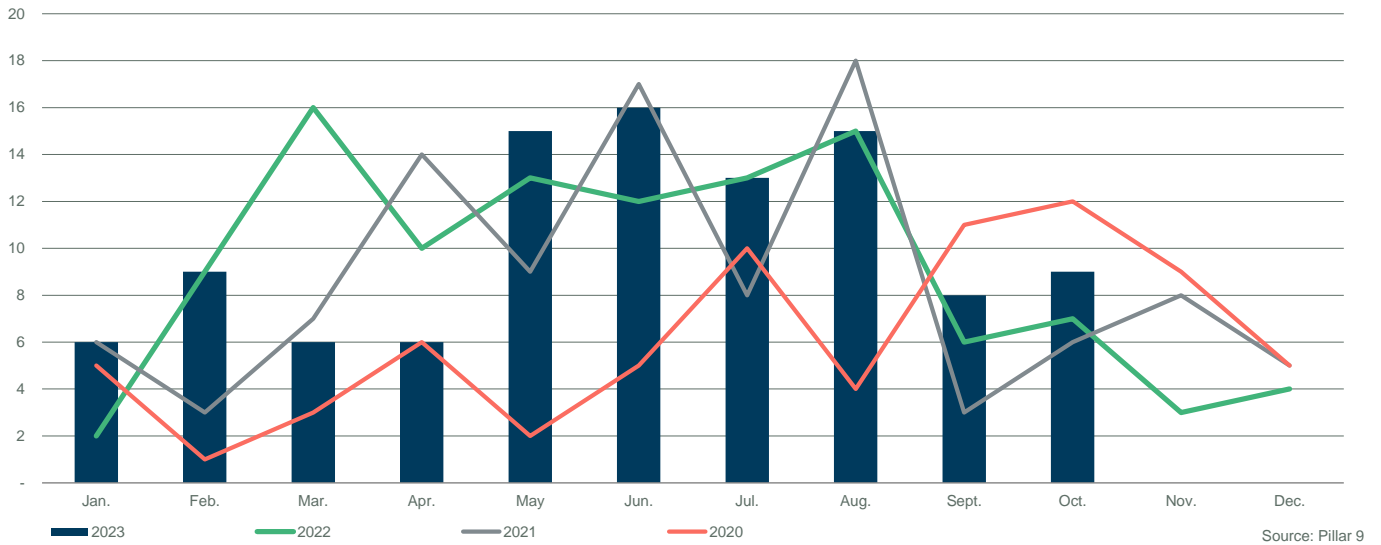
DAYS ON MARKET



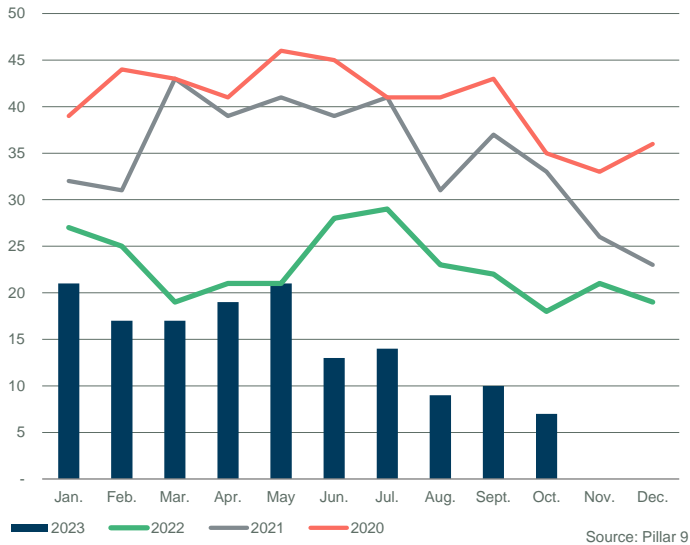
SALES TO NEW LISTINGS RATIO



SALES COMPARISON



INVENTORY COMPARISON



NEW LISTINGS COMPARISON

